

Carcass Collection Job Aid



Carcass Collection Form
Use one form for each batch of carcasses. Collect

Fill out the top section of the Carcass Collection Form.

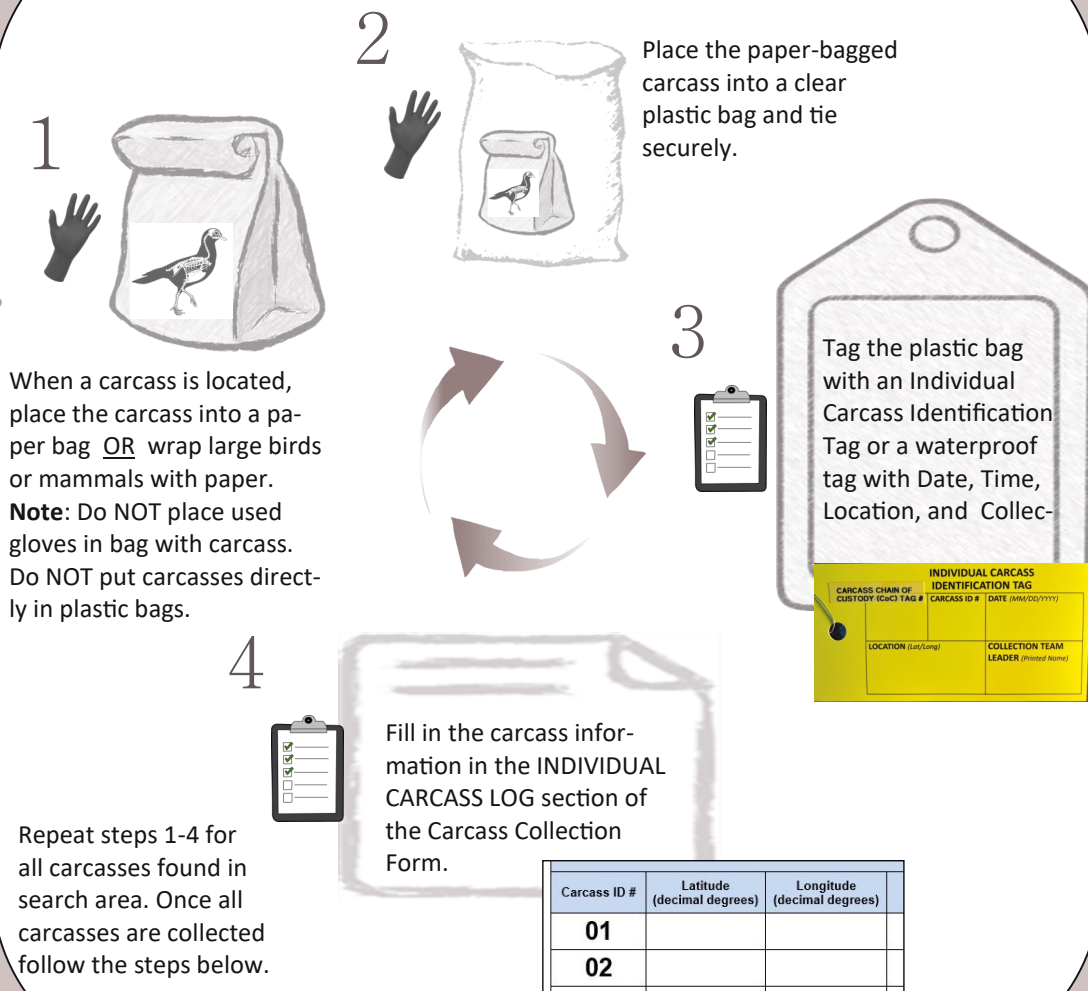
Only fill out the shoreline search section on back of form if instructed to do so by incident-specific protocols.

SHORELINE SEARCH INFORMATION	
Date:	Location and Shoreline Segment:

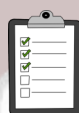


Wear nitrile gloves when handling carcasses.

Note: A new pair of gloves should be donned at the start of each new search location.



INDIVIDUAL CARCASS IDENTIFICATION TAG	
CARCASS CHAIN OF CUSTODY (COC) TAG #	CARCASS ID # [DATE (MM/DD/YYYY)]
LOCATION (Lat/Long)	COLLECTION TEAM LEADER (Printed Name)



Complete the bottom section of the Carcass Collection Form.

Fill out the Carcass Chain of Custody Tag then record the pre-printed Batch Tag No. on the Carcass Collection Form.

CARCASS CHAIN OF CUSTODY TAG	
COLLECTION DATE: (MM/DD/YYYY)	BATCH TAG NO. 1060



Place all clear bagged carcasses found in the location in a large plastic bag.

Fold the Carcass Collection Form in half, place it in a Ziplock™ bag, and then place it in the large bag.

CHAIN OF CUSTODY: Complete a "From" "To" section each time the Batch changes possession.	
From (Name/Co.)	Release Signature
To (Name/Co.)	Receipt Signature

Sign the Carcass Chain of Custody Tag and attach to the plastic bag.

The bag of carcasses is handed to the transporter.

Transporter signs Carcass Chain of Custody Tag and records information in the Transport Log for CARCASSES.

Transport Log for CARCASSES	
Form stays with Transport Team	
TRANSPORT	
Transportation Name or Call Sign:	ICS Position Group, Task Force, Strike Team

At the end of each day, the carcass collector or transporter should transfer all collected carcasses to the pre-designated carcass custodian (likely from a wildlife resource agency).

