



## ecology and environment, inc.

Global Environmental Specialists

720 Third Avenue, Suite 1700

Seattle, Washington 98104

Tel: (206) 624-9537, Fax: (206) 621-9832

---

November 1, 2016

Nicholas Knowles, Alaska Area Planner  
United States Environmental Protection Agency  
222 West Seventh Avenue, Suite #19  
Anchorage, Alaska 99513

Re: FINAL After Action Report and Gap Analysis of Response Logistics to a Trans Alaska Pipeline System Worst-Case Discharge Exercise. Contract Number EP-S7-13-07, Technical Direction Document Number 15-09-0006

Dear Nick:

Enclosed please find the FINAL After Action Report and Gap Analysis of Response Logistics to a Trans Alaska Pipeline System Worst-Case Discharge Exercise. If you have any questions regarding this submittal, please call Liza Sanden or me at 206-624-9537.

Sincerely,

ECOLOGY AND ENVIRONMENT, INC.

Brad Martin  
START-IV Emergency Response Team Leader

cc: Liza Sanden, START-IV Project Manager, E & E, Anchorage



# **After Action Report and Gap Analysis of Response Logistics to a Trans Alaska Pipeline System Worst- Case Discharge Exercise**

**Technical Direction Document: 15-09-0006**

**November 2016**

**Prepared for:**  
**UNITED STATES ENVIRONMENTAL PROTECTION AGENCY**  
222 West Seventh Avenue, #19  
Anchorage, Alaska 99513

**Prepared by:**  
**ECOLOGY AND ENVIRONMENT, INC.**  
1007 West 3<sup>rd</sup> Avenue, Suite 201  
Anchorage, AK 99501

# Table of Contents

Section	Page
<b>1 Objectives and Methodology.....</b>	<b>1-1</b>
<b>2 Scenario.....</b>	<b>2-1</b>
<b>3 Response Outline.....</b>	<b>3-1</b>
<b>4 Resource Availability .....</b>	<b>4-1</b>
4.1 Transportation .....	4-1
4.2 Accommodations.....	4-2
4.3 Communications.....	4-3
4.4 Fuel and Utilities .....	4-3
4.5 Equipment .....	4-4
4.6 Contract Personnel .....	4-4
<b>5 Limitations on the Scope of this Exercise.....</b>	<b>5-1</b>
<b>6 Project Administration Caveats, Considerations, and Key Findings .....</b>	<b>6-1</b>
<b>A Yukon River Worst-Case Discharge Scenario, Staffing Plan .....</b>	<b>A-1</b>
<b>B EPA Region 10 Emergency Response equipment, available on July 13 .....</b>	<b>B-1</b>



## List of Tables


### Table

Table 1	Exercise Participants .....	1-2
Table 2	Distance and Travel Time to Downstream Communities .....	2-2
Table 3	Summary of Personnel .....	3-3
Table 4	Key Logistics Gaps .....	6-2

## List of Figures

### Figure

Figure 1	Scenario, Location of Release.....	2-3
----------	------------------------------------	-----



## **L**ist of Abbreviations and Acronyms

<b>Term</b>	<b>Definition</b>
APSC	Alyeska Pipeline Service Company
BOA	Basic Ordering Agreement
E & E	Ecology and Environment, Inc.
EPA	U.S. Environmental Protection Agency
HAZWOPER	Hazardous Waste Operations and Emergency Response
IMT	Incident Management Team
mph	miles per hour
MRE	meal ready to eat
RV	recreational vehicles
START	Superfund Technical Assessment and Response Team
TAPS	Trans-Alaska Pipeline System
UAF	University of Alaska Fairbanks
YRB	Yukon Response Base

# Executive Summary

The U.S. Environmental Protection Agency (EPA), Emergency Response Unit, Alaska tasked Ecology and Environment, Inc., the EPA Superfund Technical Assessment and Response Team contractor, to develop a worst-case discharge scenario and an exercise based on this scenario. The scenario developed was a catastrophic oil spill from the Trans-Alaska Pipeline System into the Yukon River. The purpose of this exercise was to identify the necessary resources required for, as well as the challenges posed by, a response in a remote area without existing infrastructure to support a response. Resource availability was expected to be limited due to summertime tourism, construction, and development activities.

Once the necessary response resources were established, the actual availability of these resources was tested. The gaps in the resources needed and resources available were then determined. The key gaps identified were the lack of available worker housing and work facilities and inadequate availability of helicopters, river boats, and vessel operators.

# 1

## Objectives and Methodology

Ecology and Environment, Inc. (E & E) and the U.S. Environmental Protection Agency (EPA) conducted a multi-part exercise, including a tabletop exercise and drill, to identify weaknesses and limitations of a potential response to a worst-case discharge oil spill from the Trans-Alaska Pipeline System (TAPS) in a remote area of Alaska. The purpose of this exercise was to develop a gap analysis of these weaknesses and limitations so that they may be addressed in advance of any such spill occurring. The exercise was conducted in three parts and had three objectives:

1. **Part 1** was held on May 12, 2016. It consisted of a tabletop exercise structured as a group discussion to determine the scope and general outline of the EPA's response to a TAPS spill scenario. A worst-case discharge scenario was presented to the exercise participants. The objective of this event was for the participants to determine the size and overall assignments of the response, as well as the logistics necessary to mobilize and support the responders. The scenario used in this exercise was based on information provided in the Alyeska Pipeline Service Company (APSC), *TAPS Pipeline Oil Discharge Prevention and Contingency Plan*, 2011.
2. **Part 2** was the "Scenario Day," July 13, 2016, the date of the spill in the scenario. The objective of this drill was to fact-check the actual availability of the resources and logistics necessary to support the response identified in Part 1. This event consisted of two Superfund Technical Assessment and Response Team (START) members researching by telephone and internet the availability of necessary transportation, accommodations, and contract personnel. This event was initiated at 0915 and completed by 1500. The START members telephoned lodging and food vendors, vehicle rental providers, and EPA contractors/subcontractors that would be needed during the response. They used internet reservations systems to confirm flight availability. To facilitate the information gathering and participation in this event, START notified many of the businesses two to four weeks in advance that there would be an upcoming drill. However, they did not provide the exact date.
3. **Part 3** was an after action meeting held on August 5, 2016. The objective of this meeting was to review the results of Part 2 and identify any additional concerns.

Table 1 shows a list of exercise participants.

**Table 1 Exercise Participants**

Participant	Role	Part 1: May 12, 2016	Part 2: July 13, 2016	Part 3: August 5, 2016
Matt Carr	EPA Federal On-Scene Coordinator	X		X
Marcia Combes	EPA Alaska Regional Response Team Liaison			X
David Kappelman	EPA Environmental Response Team	X		X
Nick Knowles	EPA Alaska Planner	X		X
Mark Jen	EPA Logistics Section Chief			X
Calvin Terada	EPA Emergency Response Unit Manager	X		X
Robert Whittier	EPA Federal On-Scene Coordinator	X		X
Brad Martin	START, Emergency Response Team Leader	X		X
Vivian Melde	START, Alaska Office, Emergency Response Team	X	X	
Jim Petersen	START, Alaska Office, Emergency Response Team	X		
Liza Sanden	START, Alaska Office, Emergency Response Team (exercise facilitator)	X	X	X



# 2

## Scenario

The following scenario was presented to participants in the May 12, 2016, tabletop exercise. Figure 1 shows the location of the spill on the Yukon River and was provided to the participants:

It is July 13, 2016, at 8:30 am. APSC has reported that the TAPS has sustained a significant spill at the Yukon River Crossing. The TAPS main line has sustained a catastrophic structural failure of a longitudinal weld, resulting in a guillotine cut in a section of aboveground pipe. A communications link failure has also occurred, preventing the automatic closure of multiple valves for as many as 120 minutes following the structural failure. By the time the valves were manually closed, an estimated 100,000 barrels of North Slope crude oil was released from the pipeline, resulting in the current spill scenario. The oil has spilled to land near Burbot Creek, and a large amount has entered the creek itself. Burbot Creek is a tributary of the Yukon River, entering the river 1 mile downstream from the pipeline crossing.

At this time of year, chinook and chum salmon (*Oncorhynchus tshawytscha* and *O. keta*) are migrating up the Yukon River. Multiple other fish species are in the river as well, and a wide variety of waterfowl utilize the river and adjacent wetlands. Moose are widely distributed in this area. A concentrated nesting habitat for the peregrine falcon and other raptors is located along the Yukon River downstream of the Yukon River Bridge. To protect raptors, human activities such as aircraft operations and construction are restricted after April 15.

The current in Burbot Creek flows at 0.25 feet per second. The Yukon River flows at 3 to 6 feet per second (2 to 4 miles per hour; mph), and the water levels are low at this time of year. The weather is fair, with temperatures between 50 and 70 degrees Fahrenheit, and winds are southwest at 8 mph. No precipitation is forecasted for the next five days. The distances and travel time to downstream communities, based on a 4 mph current, are listed in Table 2.

**Table 2 Distance and Travel Time to Downstream Communities**

Village	Distance Downstream (miles)	Travel Time* (hours)	Travel Time (Days)
Rampart	56	14	0.6
Tanana	120	30	1.3
Ruby	270	67.5	2.8
Galena	320	80	3.3
Mountain Village	740	185	7.7
Emmonak	820	205	8.5
Yukon River Mouth	834	208.5	8.7

\*Travel time based on a 4 mph river current

The Yukon River Watershed extends through Alaska and the Yukon Territory and British Columbia, Canada. In the U.S. portion, the major tributaries are the Koyukuk, Tanana, and Porcupine Rivers. In Alaska, 75 communities, including 48 federally recognized tribes, are located along the Yukon River and its tributaries. Downstream from the spill, there are 24 communities, encompassing 25 federally recognized tribes.

For most of these communities, the salmon runs of the Yukon River and its tributaries provide a vital food source. Further, the cultural identity of many of this region's residents is deeply tied to the river, its salmon, and a traditional, subsistence lifestyle that relies on the salmon. While oil contamination is not expected to enter any of these tributaries or travel upstream of the spill location, it may impact migrating salmon and other Yukon River fish harvested for subsistence use.



Figure 1: Scenario, Location of Release

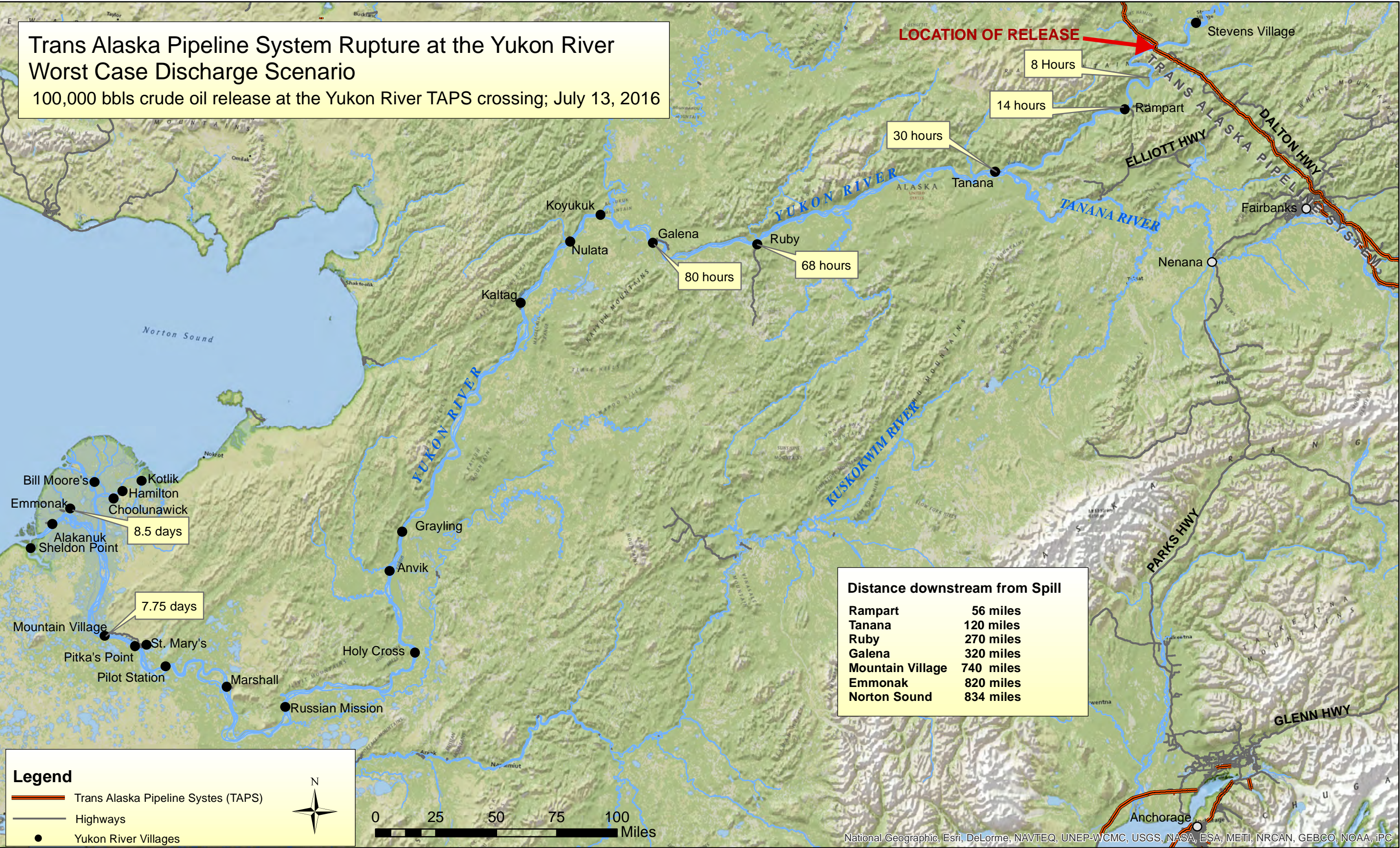


Figure prepared by Ecology and Environment, Inc. (Anchorage, AK) for the U.S. Environmental Protection Agency START IV Contract, 2016.



# 3

## Response Outline

The scope and scale of spill response was developed at the May 12 exercise. The extent of the response outlined in this exercise was restricted to agency activities occurring in Alaska at the Incident Management Team (IMT) command base, at a forward operating base, and in the field. The exercise scenario acknowledged that much of the response support would occur in Anchorage, Seattle, and areas outside of Region 10, and that responders at these locations would not be as constrained by limited resources and logistics. The response was delineated to occur in three phases, followed by a long-term remediation and monitoring phase, as described below.

**Phase 1, Response Ramp-up** – Phase 1 is the initial reaction and ramp-up period, anticipated to last the first five days of the response. During the first 24 hours (Phase 1A) after notification of the spill, an initial response team would deploy to either the Fairbanks IMT, likely located at the APSC Fairbanks Emergency Operations Center, or to a forward operating base at TAPS Pump Station 6, APSC Yukon Response Base (YRB). This initial response team would fill the primary incident command positions for the response.

Over days 2 through 5 (Phase 1B), additional responders would be assigned to the Fairbanks IMT or the YRB. These personnel would add depth to the Incident Command Team and would fill field staff positions. Field staff would be tasked with environmental monitoring and sampling, data management, oversight of APSC task forces, and assessment of impacts to historic properties and cultural resources. Shoreline cleanup assessment teams would also be deployed to determine the extent of contamination on the river and recommend appropriate clean-up techniques. During this phase, the Fairbanks IMT would reach full staffing.

**Phase 2, Sustained Operations** – Phase 2 is the sustained operations period and is divided into two parts, both of which would occur after the first week, and prior to the fifth week of the response. During the first part, Phase 2A (day 6 to 15), staffing would continue to increase as field team tasks and assignments increase, and as both the Fairbanks IMT and YRB become fully staffed. Some Fairbanks-based support positions would be added during this period. The job tasks for field teams would remain similar to those in Phase 1A, but teams would be added as needed. Teams consisting of approximately three people each would be deployed to Yukon River watershed villages, both downstream and upstream of the spill

location. These teams would be tasked with environmental sampling and monitoring and outreach to and coordination with the potentially impacted communities. Food safety, specifically that associated with consumption of salmon that may migrate through the oil spill, is expected to be of great concern to residents of Yukon River and tributary river communities. Teams would be dispatched to upstream communities to collect samples, test food for contamination, and conduct outreach with community and tribal governments and residents.

During Phase 2B (day 15 to 30), the majority of any remaining recoverable oil would be collected, and EPA-staffed field tasks, particularly environmental monitoring, sampling, and shoreline cleanup assessment, would be either completed or reduced in scale. Field personnel may be reassigned or demobilized as tasks are completed. There would be a corresponding draw-down in staff at both the IMT and YRB to reflect a reduction in field operations.

**Phase 3, Sustained Outreach.** During Phase 3 (day 31 to 80; August 14 to October 1), incident command and field staff would be reduced as appropriate. Field tasks would focus primarily on outreach to potentially impacted communities and continued monitoring of field operations. By early October, most planned field operations would be completed in preparation for the onset of winter, although operations would continue until no longer practicable. Ice formation on the river typically occurs in mid-October, with freeze-up by mid-November. It is projected that at the end of Phase 3, no agency staff would be assigned to the Fairbanks IMT, YRB, or the field.

Vessel traffic typically increases on the Yukon River during hunting seasons in September and October. Public concern could increase during this time, and additional oiled vegetation, tar balls, or other signs of contamination could be discovered. Field teams would be mobilized to investigate such reports and clean up visible contamination. These field teams would likely be deployed and managed out of Anchorage or Seattle once forward operations were demobilized.

**Phase 4, Transition from Response to Long-term Remediation and Monitoring.** With the exception of episodic field events, personnel would be demobilized from Fairbanks, the YRB, and the field, and returned to their regular duty locations during Phase 4. Oversight and operations would be managed from the EPA Field Emergency Operations Center, located at the EPA Anchorage Logistics Center. Site visits and follow-up field work would be arranged as necessary. Winter weather would limit the efficacy of most field activities. Long-term remediation and monitoring events would resume in the spring. Phase 4 was not included as part of this gap analysis, as logistics and resource availability is not expected to pose a significant challenge during this phase.

Table 3 summarizes the number of personnel that would be assigned to response in Fairbanks and at the YRB or the field during the different response periods. Attachment 1 is a detailed staffing plan for the response.

**Table 3 Summary of Personnel**

Phase		Fairbanks IMT and Fairbanks-based Field Support Staff	Yukon Response Base and Field Staff	Notes
Initial Ramp-Up	1A (1 <sup>st</sup> 24-hours)	18	4	
	1B (Day 1–Day 5)	37	71	Staffing continues to increase during this phase as needs, tasks, and assignments are identified.
Sustained Operations	2A (Day 6–15)	38	103	Staffing continues to increase during this phase as needs, tasks, and assignments are identified.
	2B (Day 16–30; continued staff draw-down through Day 80)	40	36	Staffing decreases during this phase as tasks are completed.
Sustained Outreach	3 (Day 31–80)	4, standing down to 0	36, standing down and demobilizing to 0	Staffing decreases during this phase as tasks are completed.
Long-term Remediation and Monitoring	4	0	0	Operations are monitored and managed from EPA Alaska Operations Office.

# 4

## Resource Availability

The following sections describe the findings of the July 13, 2016, exercise in confirming available resources.

### 4.1 Transportation

**Air Transportation** – In general, air transportation to Fairbanks from Anchorage or the lower 48 states was not found to pose a constraint on the response. However, it is unlikely that responders from outside of Alaska could arrive prior to 8:00 pm on the day of the spill. The limited availability of airline seats, the time necessary to depart for and travel to the airport, and required airport arrival times and flight duration would restrict the arrival of outside responders. During the exercise, there were five seats on one flight from Seattle, arriving in Fairbanks at 4:30 pm. However, to make this flight, individuals would have needed to arrive at the airport within two hours of the spill notification. It was considered unlikely that any responders could make this flight.

Timely air transportation to Yukon River villages was generally found to be available via scheduled air flights. The gaps in this coverage could be met by Security Aviation, START's Basic Ordering Agreement (BOA) contractor for air travel. During the exercise, Security Aviation was found to be available to provide service on the same day and for the upcoming days. They have fixed wing aircraft capable of transporting up to nine passengers or nearly 2,400 pounds. They are able to provide transportation within Alaska and between Anchorage and Seattle.

Helicopters are a limited resource in Alaska. Most helicopters in the region are likely to be under contract to APSC or employed by wildland firefighting response agencies. Exercise participants identified this limited helicopter availability as a shortcoming.

A gravel airstrip is located just north of the Yukon River Crossing at milepost 61 Dalton Highway. A helicopter landing zone is located at the YRB.

**Ground Transportation** – The exercise found that adequate ground transportation rentals and leases were available, including crew cab pick-up trucks and 15-passenger vans. The drive from Fairbanks to the Yukon is approximately 160 miles and takes 3.5 to 4 hours. Much of the highway between Fairbanks and the Yukon is unpaved, and road conditions can be poor in places. Gasoline and diesel are available in Fairbanks, in Fox (10 miles north of Fairbanks), and at the

Yukon River Camp, although the fuel storage capacity in this camp is limited and should not be relied on in a large-scale response.

**River Transportation** – Vessel transportation on the Yukon River is a previously identified resource limitation. There are no known commercial vendors of boats nor licensed or certified vessel operators on the river. A boat ramp and barge landing are located on the north bank of the river at the Dalton Highway.

## **4.2 Accommodations**

The exercise addressed accommodations for personnel in the two primary response locations: Fairbanks and the Yukon River Crossing. The confirmation of available accommodations focused on lodging and food; however, field responders would also require additional services such as electrical supply, potable water, portable toilets, showering facilities, and laundry services.

It is presumed that temporary work space would be necessary to support the EPA's field activities, as it is expected that the capacity of the YRB would be exceeded. The Yukon River Crossing contains no additional appropriate facilities to support the field response. On the north side of the Yukon River, there are large areas of gravel pad adjacent to the highway. Additionally, 4 to 7 miles north of the river on the Dalton Highway, there are hardened surface areas near a private campground and an Alaska Department of Transportation maintenance station and a private runway. Electrical generation, water, and toilet facilities would be necessary to support temporary work space at any of these locations.

**Fairbanks** – To assess the availability of lodging, two potential vendors were contacted, Fountainhead Resorts and the University of Alaska Fairbanks (UAF). These vendors were included in the exercise due to their willingness to participate and the large number of rooms at their facilities. Between the two vendors, they were able to meet the needs for Fairbanks-based lodging. This includes accommodations for 44 people who would be working out of the YRB and commuting between Fairbanks and the YRB for the first four days. UAF dormitories were only available until the arrival of students for fall semester, beginning approximately August 13; after that, all lodging would be available only from commercial facilities. Commercial lodging is in high demand and generally limited in availability until Labor Day (September 5, 2016).

It is assumed that responders in Fairbanks would utilize local restaurants and grocery stores. There are catering companies (four identified and two contacted) that can provide sack or box lunches for 50 to 100 people. The companies require 48 hours' notice to provide the lunches. Groceries in Fairbanks are available at Fred Meyer, Carrs Safeway, and Sam's Club.

**Yukon River** – There are some accommodations in this area, including lodging and food service at the Yukon River at the YRB and at the Yukon River Camp, a commercial facility providing rooms, food, and fuel; however, these are expected



to have no availability. Alternative lodging options, in the form of a worker camp or similar temporary billeting, would have to be established at the Yukon. This camp would need to have facilities for personal hygiene, including toilets, showers, and laundry, as well as a mess hall or similar capability to prepare and serve food.

For the first one to five days, workers would need to commute from Fairbanks or camp in tents or recreational vehicles (RVs). RVs are available for rent via commercial vendors in Fairbanks and Anchorage. During the first few days, personnel assigned to the YRB would also need to provide their own food. Meals ready-to-eat (MREs) and freeze-dried food may be the most feasible option. There are two restaurants near the Yukon River: Yukon Camp (located at the Yukon River Crossing) and the Hot Spot (located 5 miles north of the Yukon River Crossing). However, these businesses would likely exceed their food stores and food preparation capability during the initial response.

### **4.3 Communications**

Insufficient communications equipment and service availability is a shortcoming known prior to the exercise. There is no cellular phone service at the Yukon River Crossing. The 103rd Civil Support Team or the State Division of Homeland Security and Emergency Management may be able to set up a remote communications station for this location.

Cellular phone service ends approximately 30 miles north of Fairbanks, Alaska. In Fairbanks, national cellular service companies may not have available roaming coverage. The only major companies with network coverage are AT&T, GCI, and Verizon. Roaming service is often unreliable and restricted during times of high network use.

An equipment function check of an EPA satellite phone was conducted on July 26, 2013, at Coldfoot, Alaska, 120 miles north of the Yukon River. The phone worked, but not consistently. Phone numbers had to be redialed due to lack of service, but once the call was connected, the connection was good for the duration of the call. The sound quality of the phone connection was acceptable. Satellite phones are available for rent in Anchorage and Fairbanks, and from outside of Alaska, but the availability of these was not checked during this exercise.

There are also commercial businesses capable of establishing remote cellular or satellite communications systems. The availability and scope of these services were not part of this exercise.

### **4.4 Fuel and Utilities**

The Yukon River Crossing and vicinity lies outside of any electrical or water service area. As noted above, basic utilities, including services for temporary electricity, water, and sewage management, would need to be established at the

Yukon River Crossing. There are vendors located in Anchorage and Fairbanks capable of providing these services; however, they were not contacted to confirm their availability during this exercise. It is expected that a worker camp would be established, and the company contracted to establish such a camp would include fuel and utilities as part of their services.

Fuel for electrical generation and for vehicles would need to be transported to the Yukon River and a temporary fueling station established.

#### **4.5 Equipment**

The availability of equipment such as environmental monitoring and sampling equipment, electric generators, heaters, and office equipment was not included in the scope of this exercise. However, a list of the EPA Region 10 Emergency Response equipment, available on July 13, was recorded and is included in Attachment 2. To assess the actual availability of equipment, a more detailed description of tasks and assignments would be necessary.

Equipment is available for rent in Anchorage and also from vendors outside of Alaska. Equipment is also available from other federal agencies and the EPA outside of Region 10. At the time of this exercise, the EPA Environmental Response Team (ERT) had prepared for several preplanned incidents, including the Republican National Convention, Democratic National Convention, and 2016 Summer Olympics. ERT environmental monitoring and sampling equipment was dedicated to those events as part of their security protocols.

#### **4.6 Contract Personnel**

During the drill, E & E confirmed that they were able to provide 46 staff within 72 hours, available for two to four weeks. Additional staff would be available with three to four additional days' notice. The majority of these personnel are qualified in Hazardous Waste Operations and Emergency Response (HAZWOPER), which would not be required for all duties.

Northern Land Use, START's BOA contractor for archaeological and cultural assessment services, confirmed that they could provide a four-person crew for the first two weeks, with immediate deployment, and one person for days 15 to 30. Additional personnel could also be provided, or deployments could be extended for longer dates.

# 5

## Limitations on the Scope of this Exercise

The purpose of this exercise was to confirm the availability of typical resources necessary to support a significant oil spill response—those available via regular commercial reservations and purchasing. It was considered outside the scope to investigate secondary options that would require new contracts, agreements, or procurement from locations outside of Alaska.

As expected, the resources to support operations at the Yukon River Crossing were found to be limited. Substantial services would need to be brought into the Yukon River Crossing to establish temporary worker housing, support facilities, and temporary indoor work space. This exercise did not include efforts to identify and contact potential vendors of these services. The EPA would likely work with its federal response partners, particularly the Department of Defense, Federal Emergency Management Agency, and General Services Administration, to assist in establishing these facilities.

Other resource gaps were found as well, such as helicopter and boat services, and available and appropriate providers have not been identified for these areas.

Additionally, the intent of Part 1 of this exercise was to have participants determine the overall size and extent of the EPA's response, with a general description of the type of work to be accomplished by field teams. It did not include detailed team assignments and tasks necessary to determine the actual equipment needed.

# 6

## Project Administration Caveats, Considerations, and Key Findings

The primary caveat of this report is that no resource can be guaranteed to be available in an actual event. The summer months are peak months for tourism and construction activities, which utilize many of the resources that would be needed in an oil spill response. Additional incidents, such as large wildfires in the Interior of Alaska, often utilize any available airline seats, accommodations, and vehicle rentals as wildland firefighters travel to the fire area and residents are evacuated. The following is a list of specific concerns regarding resource availability.

- Same-day travel on commercial airlines from outside of Alaska to hub cities in Alaska is very limited. While there are frequent flights from Seattle to Anchorage or Fairbanks, these are often booked at or near capacity, with evening flights generally the fullest. Additionally, it is assumed that responders would require a minimum of four hours' notification prior to a flight to allow for travel preparation, transportation to the airport, and arrival at the airport two hours prior to the flight departure. With the flight time included, the quickest time a Seattle-based responder could arrive after notification is 8 hours.
- The availability of work trucks, appropriate for travel on the Dalton Highway, was higher than typical at the time of this exercise, due to a downturn in work on the North Slope and the recent cancellation of contracts to lease these vehicles.
- The actual availability of commercial lodging is highly variable, with many hotels having advance reservations of large blocks of rooms. If commercial lodging is utilized, it is unlikely that long-term, consistent accommodations in one facility or room would be available. Hotel and room changes would be required.
- Dormitory and bunkhouse facilities are available at UAF and Fort Wainwright, including the Bureau of Land Management Fire Services facilities at Fort Wainwright. However, the actual availability of these facilities is highly variable, and they are only available if their primary purpose (housing for students, firefighters or military personnel) has not exceeded its capacity. At UAF, the Fire Services has a contract reservation for housing of fire service personnel during the summer; availability is dependent on that use. From mid-August through May, university dormitories are generally reserved for the exclusive use of students or others associated with UAF.
- This scenario takes place in the summer. A winter response would entail additional challenges and resource limitations. Responders would need

## 6. Project Administration Caveats, Considerations, and Key Findings

winter gear, temporary buildings appropriate for negative degrees Fahrenheit, and vehicles equipped for driving in snow and ice. Modifications and adaptations would also be necessary to maintain and operate environmental sampling and monitoring equipment at temperatures below freezing; some equipment may not be functional at winter temperatures.

**Table 4 Key Logistics Gaps**

Logistics Gap		Alternatives and Options
1	Worker accommodations and support services at the Yukon River Crossing.	<ul style="list-style-type: none"> <li>• Coordinate with other agency response partners to procure temporary buildings and other facilities or contract with vendors providing these services.</li> </ul>
2	Work space and facilities at the Yukon River Crossing.	<ul style="list-style-type: none"> <li>• Coordinate with other agency response partners to procure temporary buildings and other facilities or contract with vendors providing these services.</li> </ul>
3	Helicopter services	<ul style="list-style-type: none"> <li>• Coordinate with other agency response partners to identify helicopter services, including government assets and private vendors.</li> <li>• Task START to enter into BOAs with suitable vendors capable of providing helicopter services.</li> </ul>
4	River boats and vessel operators	<ul style="list-style-type: none"> <li>• Coordinate with other agency response partners to identify government-owned and private options for appropriate river boats and vessel operators.</li> </ul>

# A

## **Yukon River Worst-Case Discharge Scenario, Staffing Plan**

Attachement 1. Yukon River WCD TAPS Discharge Scenario, Staffing Plan

Note: The staffing plan below only includes staff expected to be deployed to the field and Fairbanks IMT. It is expected there will be substantial personnel working on the response from Anchorage, Seattle or other regular duty locations.

PHASE 1	Phase 1A, 1st 24 Hours. These position assignments are expected to be filled within first 24 hours and maintained through response.						
	Position	# Day Shift	# Night Shift	# Total Personal	Work Location	Support Base/ Lodging	Notes
	FOSC at IMT	1	1	2	Fairbanks IMT	Fairbanks	
	Deputy IC at IMT	1	1	2	Fairbanks IMT	Fairbanks	
	Environmental Unit OSC	1	1	2	Fairbanks IMT	Fairbanks	
	START at IMT	2	2	4	Fairbanks IMT	Fairbanks	
	Field OSC @ Yukon Base	1	1	2	Yukon Response Base	TBD, Eventually Yukon River	
	START at Yukon Base	1	1	2	Yukon Response Base	TBD, Eventually Yukon River	
	Liaison Officer	1	1	2	JIC	Fairbanks	
	Public Information Officer	1	1	2	JIC	Fairbanks	
	Legal Officer	1	1	2	Fairbanks IMT	Fairbanks	
	Logistics Chief	1	1	2	Fairbanks IMT	Fairbanks	
PHASE 1	Phase 1B, Day 2-Day 5. Additional staff are added to support Incident Command at Fairbanks IMT and Yukon Response Base and field activities. Staffing numbers reflect anticipated staff by Day 5/ End of Phase 1, the initial response ramp-up.						
	Communications Manager	1	1	2	Fairbanks IMT	Fairbanks	
	Documentation Specialist	2	2	4	Fairbanks IMT	Fairbanks	
	Historic Properties Specialist (BOA) at IMT	1	1	2	Fairbanks IMT	Fairbanks	
	Public Information Officer, Additional	1	1	2	Fairbanks IMT		
	Scientific Support Coordinator	1	1	2	Fairbanks IMT	Fairbanks	
	Tribal Liaisons			0	Fairbanks IMT	Fairbanks	
	USFWS Staff to Environmental Unit	1	1	2	Fairbanks IMT	Fairbanks	
	Alyeska Task Force Monitors	8	8	16	Field	Yukon	Providing EPA oversight of Alyeska's Task Forces. 8 task forces applicable to EPA oversight are listed in Alyeska's C-Plan Scenario for this location.
	Data Management	2	2	4	Field	Yukon	1 per shift initially, increasing to 3-4 per shift
	Data Management	4	4	8	Fairbanks IMT	Yukon	1 per shift initially, increasing to 3-4 per shift
	Field Staff, Monitoring & Outreach (Mix of EPA and START; possibly USCG Pac Strike Team)	27	tbd	27	Field	TBD	Nine 3-person teams, air monitoring, water sampling, community outreach. Base team for nearest 7 communities ASAP. Two additional teams will be 'traveling teams' providing initial coverage to upstream communities (to address fish safety concerns and further downstream). Assume each team may be 2 STARTS, primarily for sampling/monitoring, and an EPA for Community Outreach. Lodging may be based in Yukon or Fairbanks depending on mode of travel to field locations and/or villages.
	Historic Properties Specialist (BOA) for Task Force oversight and SCAT assistance	4	tbd	4	Field	Yukon	4 Alyeska Containment and Diversion Task Forces (identified in Alyeska C-Plan scenario) may require oversight. May be assigned to SCAT teams as appropriate.
	ISB Air Monitoring (if applicable)	4	4	8	Field	Yukon	Anticipate that PRP may request use of ISB to manage oiled debris/vegetation. If so, air monitors will be required at those locations.
	Safety Officer (for EPA actions)	1	1	2	Field	Yukon	
	Equipment Manager	1	1	2	Field	Yukon	Manage and maintain equipment for field teams. (Calibration, charge, maintenance, etc)
	Logistics Support for Field Teams	2		2	Field	Fairbanks	Assist in expediting supplies to field teams, receipt of samples sent in from field, transport field teams to/from airport, etc. Physical sample management (label, package, ship to laboratory). May travel between Fairbanks, Yukon base and other field locations.
	TOTAL STAFF AT END OF PHASE 1			105			

Phase 2A, Day 6-15: Sustained Operations. Incident is fully staffed at Fairbanks IMT and Yukon River Response Base. Sustained operations include water sampling and SCAT. As work assignments are added, field staff will be mobilized to field. Findings of SCAT teams and field								
PHASE 2	NEW	Position	# Day Shift	# Night Shift	# Total Personal	Work Location	Support Base/ Lodging	Notes
		FOSC at IMT	1	1	2	Fairbanks IMT	Fairbanks	
		Deputy IC at IMT	1	1	2	Fairbanks IMT	Fairbanks	
		Environmental Unit OSC	1	1	2	Fairbanks IMT	Fairbanks	
		START at IMT	2	2	4	Fairbanks IMT	Fairbanks	
		Field OSC @ Yukon Base	1	1	2	Yukon Response Base	Yukon	
		START at Yukon Base	1	1	2	Yukon Response Base	Yukon	
		Liaison Officer	1	1	2	JIC	Fairbanks	
		Public Information Officer	1	1	2	JIC	Fairbanks	
		Legal Officer	1	1	2	Fairbanks IMT	Fairbanks	
		Logistics Chief	1	1	2	Fairbanks IMT	Fairbanks	
		Communications Manager	1	1	2	Fairbanks IMT	Fairbanks	
		Documentation Specialist	2	2	4	Fairbanks IMT	Fairbanks	
		Historic Properties Specialist (BOA) at IMT	1	1	2	Fairbanks IMT	Fairbanks	
		Public Information Officer, Additional	1	1	2	Fairbanks IMT	Fairbanks	
		Scientific Support Coordinator	1	1	2	Fairbanks IMT	Fairbanks	
		Tribal Liaisons			0	Fairbanks IMT	Fairbanks	
		USFWS Staff to Environmental Unit	1	1	2	Fairbanks IMT	Fairbanks	
		Alyeska Task Force Monitors	8	8	16	Field	Yukon	Providing EPA oversight of Alyeska's Task Forces. 8 task forces applicable to EPA oversight are listed in Alyeska's C-Plan Scenario for this location.
		Data Management	2	2	4	Field	Yukon	
		Data Management	4	4	8	Fairbanks IMT	Yukon	
		Field Staff, Monitoring & Outreach (Mix of EPA and START)	27	?	27	Field	TBD	Nine 3-person teams, air monitoring, water sampling, community outreach. Base team for nearest 7 communities ASAP. Two additional teams will be 'traveling teams' providing initial coverage to upstream communities (to address fish safety concerns and further downstream). Assume each team may be 2 STARTS, primarily for sampling/monitoring, and an EPA for Community Outreach. Lodging may be based in Yukon or Fairbanks depending on mode of travel to field locations and/or villages.
		Historic Properties Specialist (BOA) for Task Force oversight and SCAT assistance	4	?	4	Field	Yukon	4 Alyeska Containment and Diversion Task Forces (identified in Alyeska C-Plan scenario) may require oversight. May be assigned to SCAT teams as appropriate.
		ISB Air Monitoring (if applicable)	4	4	8	Field	Yukon	Anticipate that PRP may request use of ISB to manage oiled debris/vegetation. If so, air monitors will be required at those locations.
		Safety Officer (for EPA actions)	1	1	2	Field	Yukon	
		Equipment Manager	2	2	4	Field	Yukon	Staffing increased to reflect increase in field teams and equipment
		Logistics Support for Field Teams	2		2	Field	Fairbanks	Assist in expediting supplies to field teams, receipt of samples sent in from field, transport field teams to/from airport, etc.
		SCAT Team, water samplers	30	?	30	Field	TBD	Assist in expediting supplies to field teams, receipt of samples sent in from field, transport field teams to/from airport, etc. Physical sample management (label, package, ship to laboratory). May travel between Fairbanks, Yukon base and other field locations.Lodging may be based in Yukon or Fairbanks depending on mode of travel to field locations and/or villages.
		TOTAL AT END OF PHASE 2A				141		





**B**

**EPA Region 10 Emergency  
Response equipment, available  
on July 13,2016**

## EPA Region 10 - Weekly Equipment List

7/13/2016

Tag Name	Model Name/num	Facility	Barcode	Sub Location	Status
Air Sampling	1532-107-G557X Pump (GAST)	A- Seattle	A59281	CR1-R9A	Checked out
Air Sampling	1532-107-G557X Pump (GAST)	A- Seattle	A59282	CR1-R9A	Available
Air Sampling	1532-107-G557X Pump (GAST)	A- Seattle	A59283	CR1-R9A	Needs Service
Air Sampling	1532-107-G557X Pump (GAST)	A- Seattle	A59284	CR1-R9A	Available
Air Sampling	1532-107-G557X Pump (GAST)	A- Seattle	A59285	CR1-R9A	Available
Air Sampling	1532-107-G557X Pump (GAST)	A- Seattle	A59286	CR1-R9A	Checked out
Air Sampling	1532-107-G557X Pump (GAST)	A- Seattle	A59287	CR1-R9A	Checked out
Air Sampling	1532-107-G557X Pump (GAST)	A- Seattle	A59288	CR1-R9A	Available
Air Sampling	AirChek XR5000 Pump	A- Seattle	A95112	ER Truck -- ERT	Available
Air Sampling	AirChek XR5000 Pump	A- Seattle	A95113	ER Truck -- ERT	Available
Air Sampling	AirChek XR5000 Pump	A- Seattle	A95114	ER Truck -- ERT	Available
Air Sampling	AirChek XR5000 Pump	A- Seattle	A95115	ER Truck -- ERT	Available
Air Sampling	AirChek XR5000 Pump	A- Seattle	A95116	ER Truck -- ERT	Available
Air Sampling	AirChek XR5000 Pump	A- Seattle	SB6149	Level A Truck -- LAT	Available
Air Sampling	AirChek XR5000 Pump	A- Seattle	SB6150	Level A Truck -- LAT	Available
Air Sampling	AirChek XR5000 Pump	A- Seattle	SB6151	Level A Truck -- LAT	Available
Air Sampling	AirChek XR5000 Pump	A- Seattle	SB6152	Level A Truck -- LAT	Available
Air Sampling	AirChek XR5000 Pump	A- Seattle	SB6153	Level A Truck -- LAT	Available
Air Sampling	AirChek XR5000 Pump	Portland	A95130	PERT	Available
Air Sampling	AirChek XR5000 Pump	Portland	A95131	PERT	Available
Air Sampling	AirChek XR5000 Pump	Portland	A95132	PERT	Available
Air Sampling	AirChek XR5000 Pump	Portland	A95133	PERT	Available
Air Sampling	AirChek XR5000 Pump	Portland	A95134	PERT	Available
Air Sampling	BM2000H Pump (Hi Vol)	A- Seattle	465031	B1-5C/6C	Decommissioned
Air Sampling	BM2000H Pump (Hi Vol)	A- Seattle	465033	B1-5C/6C	Decommissioned
Air Sampling	BM2000H Pump (Hi Vol)	A- Seattle	465034	B1-5C/6C	Decommissioned
Air Sampling	BM2000H Pump (Hi Vol)	A- Seattle	645419	B1-5C/6C	Available
Air Sampling	BM2000H Pump (Hi Vol)	A- Seattle	645420	B1-5C/6C	Available
Air Sampling	BM2000H Pump (Hi Vol)	A- Seattle	645422	B1-5C/6C	Available
Air Sampling	BM2000H Pump (Hi Vol)	A- Seattle	645424	B1-5C/6C	Available
Air Sampling	BM2000H Pump (Hi Vol)	A- Seattle	645425	B1-5C/6C	Available
Air Sampling	BM2000H Pump (Hi Vol)	A- Seattle	724192	B1-5C/6C	Available
Air Sampling	BM2000H Pump (Hi Vol)	A- Seattle	724193	B1-5C/6C	Available
Air Sampling	BM2000H Pump (Hi Vol)	A- Seattle	724194	B1-5C/6C	Available
Air Sampling	BM2000H Pump (Hi Vol)	A- Seattle	724199	B1-5C/6C	Available
Air Sampling	BM2000H Pump (Hi Vol)	Portland	645421	Warehouse - General	Available
Air Sampling	BM2000H Pump (Hi Vol)	Portland	645423	Warehouse - General	Available
Air Sampling	BM2000H Pump (Hi Vol)	Portland	691844	Warehouse - General	Available
Air Sampling	BM2000H Pump (Hi Vol)	Portland	724197	Warehouse - General	Available
Air Sampling	BM2000H Pump (Hi Vol)	Portland	724198	Warehouse - General	Available
Air Sampling	Barometer (no model number)	A- Seattle	A59274	CR2-R2A	Available
Air Sampling	GPS-1 High Volume PUF	A- Seattle	720684	B1-5C/6C	Available
Air Sampling	GPS-1 High Volume PUF	A- Seattle	724146	B1-5C/6C	Available
Air Sampling	GPS-1 High Volume PUF	A- Seattle	724202	B1-5C/6C	Available
Air Sampling	GPS-1 High Volume PUF	A- Seattle	724203	B1-5C/6C	Available
Air Sampling	GPS-1 High Volume PUF	A- Seattle	724204	B1-5C/6C	Available
Air Sampling	GPS-1 High Volume PUF	A- Seattle	724207	B1-5C/6C	Available
Air Sampling	GPS-1 High Volume PUF	A- Seattle	724208	B1-5C/6C	Available
Air Sampling	GUV-16H GMW PM-10	A- Seattle	645426	B1-4A/5A	Available
Air Sampling	GUV-16H GMW PM-10	A- Seattle	691856	B1-4A/5A	Available
Air Sampling	GUV-16H GMW PM-10	A- Seattle	691861	B1-4A/5A	Available

Air Sampling	GUV-16H GMW PM-10	A- Seattle	691862	B1-4A/5A	Available
Air Sampling	GUV-16H GMW PM-10	A- Seattle	691863	B1-4A/5A	Available
Air Sampling	H-810 Pump (RADeCO Air Volume Totalizer)	A- Seattle	A59995	CR1-R7A	Available
Air Sampling	H-810 Pump (RADeCO Air Volume Totalizer)	A- Seattle	A59996	CR1-R8A	Available
Air Sampling	H-810 Pump (RADeCO Air Volume Totalizer)	A- Seattle	A59997	CR1-R7A	Available
Air Sampling	H-810 Pump (RADeCO Air Volume Totalizer)	A- Seattle	A59998	CR1-R7A	Available
Air Sampling	H-810 Pump (RADeCO Air Volume Totalizer)	A- Seattle	A59999	CR1-R8A	Available
Air Sampling	H-810 Pump (RADeCO Air Volume Totalizer)	B-Anchorage	A60861	G-4	Available
Air Sampling	H-810 Pump (RADeCO Air Volume Totalizer)	B-Anchorage	A60862	G-4	Available
Air Sampling	H-810 Pump (RADeCO Air Volume Totalizer)	B-Anchorage	A60863	G-4	Available
Air Sampling	H-810 Pump (RADeCO Air Volume Totalizer)	B-Anchorage	A60864	G-4	Available
Air Sampling	H-810 Pump (RADeCO Air Volume Totalizer)	Portland	A95160	Equipment Room	Available
Air Sampling	H-810 Pump (RADeCO Air Volume Totalizer)	Portland	A95161	Equipment Room	Available
Air Sampling	H-810 Pump (RADeCO Air Volume Totalizer)	Portland	A95162	Equipment Room	Available
Air Sampling	H-810 Pump (RADeCO Air Volume Totalizer)	Portland	A95163	Equipment Room	Available
Air Sampling	Hazmat WeatherLog HM-1 Weather Station	A- Seattle	A59927	Level A Truck -- LAT	Available
Air Sampling	Hazmat WeatherLog HM-1 Weather Station	A- Seattle	A60711	ER Truck -- ERT	Available
Air Sampling	Hazmat WeatherLog HM-1 Weather Station	B-Anchorage	A59925	I-1	Available
Air Sampling	Hazmat WeatherLog HM-1 Weather Station	Portland	A59926	PERT	Available
Air Sampling	PCXR8 Universal Pump (Personal AirCheck)	A- Seattle	465121	- - -	Decommissioned
Air Sampling	PCXR8 Universal Pump (Personal AirCheck)	A- Seattle	465124	CR1-R9A	Available
Air Sampling	PCXR8 Universal Pump	A- Seattle	465137	CR1-R9A	Available
Air Sampling	PCXR8 Universal Pump (Personal AirCheck)	A- Seattle	465144	CR1-R9A	Available
Air Sampling	PCXR8 Universal Pump (Personal AirCheck)	A- Seattle	465145	CR1-R9A	Checked out
Air Sampling	PCXR8 Universal Pump (Personal AirCheck)	A- Seattle	724741	- - -	Decommissioned
Air Sampling	PCXR8 Universal Pump (Personal AirCheck)	A- Seattle	724742	CR1-R9A	Checked out
Air Sampling	PCXR8 Universal Pump	A- Seattle	734128	CR1-R9A	Available
Air Sampling	PCXR8 Universal Pump (Personal AirCheck)	A- Seattle	734132	CR1-R9A	Available
Air Sampling	PCXR8 Universal Pump (Personal AirCheck)	A- Seattle	A59911	CR1-R9A	Checked out
Air Sampling	PCXR8 Universal Pump (Personal AirCheck)	A- Seattle	A59912	CR1-R9A	Checked out

Air Sampling	PCXR8 Universal Pump (Personal AirCheck)	A- Seattle	A59913	CR1-R9A	Checked out
Air Sampling	PCXR8 Universal Pump (Personal AirCheck)	A- Seattle	A59914	CR1-R9A	Needs Service
Air Sampling	PCXR8 Universal Pump (Personal AirCheck)	A- Seattle	A59915	CR1-R9A	Checked out
Air Sampling	PCXR8 Universal Pump (Personal AirCheck)	B-Anchorage	A59892	H-3	Available
Air Sampling	PCXR8 Universal Pump (Personal AirCheck)	B-Anchorage	A59893	H-3	Available
Air Sampling	PCXR8 Universal Pump (Personal AirCheck)	B-Anchorage	A59894	H-3	Available
Air Sampling	PCXR8 Universal Pump (Personal AirCheck)	B-Anchorage	A59895	H-3	Available
Air Sampling	PCXR8 Universal Pump (Personal AirCheck)	B-Anchorage	A59896	H-3	Available
Air Sampling	PCXR8 Universal Pump (Personal AirCheck)	Portland	465132	Equipment Room	Decommissioned
Air Sampling	PCXR8 Universal Pump (Personal AirCheck)	Portland	465136	Equipment Room	Available
Air Sampling	PCXR8 Universal Pump (Personal AirCheck)	Portland	724745	Equipment Room	Available
Air Sampling	PCXR8 Universal Pump (Personal AirCheck)	Portland	734126	Equipment Room	Available
Air Sampling	PCXR8 Universal Pump (Personal AirCheck)	Portland	734129	Equipment Room	Available
Air Sampling	PQ200 Fine Particulate Sampler	A- Seattle	SB6159	Overhead Storage	Decommissioned
Air Sampling	PQ200 Fine Particulate Sampler	A- Seattle	SB6160	Overhead Storage	Decommissioned
Air Sampling	QuickTake 30 Pump	A- Seattle	A60713	CR1-R9A	Available
Air Sampling	QuickTake 30 Pump	A- Seattle	A60714	CR1-R9A	Available
Air Sampling	QuickTake 30 Pump	B-Anchorage	A60715	H-3	Available
Air Sampling	QuickTake 30 Pump	B-Anchorage	A60716	H-3	Available
Air Sampling	QuickTake 30 Pump	Portland	A60717	PERT	Available
Air Sampling	QuickTake 30 Pump	Portland	A60718	PERT	Available
Air Sampling	Weather Wizard III Weather Station	A- Seattle	897912	CR2-R6B	Available
Air Sampling	WeatherHawk 520 Wireless Weather Station	A- Seattle	A60884	CR2-R9Floor	Available
Bio. Agent Detection	Guardian BioThreat Alert Reader	A- Seattle	A59908	CR1-R6A	Available
Bio. Agent Detection	HEPA Vacuum (no model number)	A- Seattle	A59761	CR1-R6Floor	Available
Bio. Agent Detection	HEPA Vacuum (no model number)	A- Seattle	A59762	CR1-R6Floor	Available
Bio. Agent Detection	HEPA Vacuum (no model number)	B-Anchorage	A59760	L-2	Available
Calibration	320-235-4600 Rotameter	A- Seattle	A59297	CR1-R9B	Available
Calibration	320-235-4600 Rotameter	A- Seattle	A59300	CR1-R9B	Available
Calibration	320-235-4600 Rotameter	B-Anchorage	A59306	H-2	Available
Calibration	320-235-4600 Rotameter	Portland	A59303	PERT	Available
Calibration	320-5-245 Flow Calibrator	A- Seattle	A59298	CR1-R9B	Available
Calibration	320-5-245 Flow Calibrator	A- Seattle	A59301	CR1-R9B	Available
Calibration	320-5-245 Flow Calibrator	B-Anchorage	A59307	H-2	Available
Calibration	320-5-245 Flow Calibrator	Portland	A59304	PERT	Available
Calibration	320-5-4600 Rotameter	A- Seattle	A59296	CR1-R9B	Available
Calibration	320-5-4600 Rotameter	A- Seattle	A59299	CR1-R9B	Available
Calibration	320-5-4600 Rotameter	B-Anchorage	A59305	H-2	Available

Calibration	320-5-4600 Rotameter	Portland	A59302	PERT	Available
Calibration	D-828 Flow Calibrator	A- Seattle	A60712	CR1-R7A	Available
Calibration	Defender 520-High Flow	A- Seattle	A60878	ER Truck -- ERT	Available
Calibration	Defender 520-High Flow	A- Seattle	A95135	Level A Truck -- LAT	Available
Calibration	Defender 520-High Flow	A- Seattle	A95136	CR2-R1A	Available
Calibration	Defender 520-High Flow	B-Anchorage	A60882	H-3	Available
Calibration	Defender 520-High Flow	Portland	A60880	PERT	Available
Calibration	Defender 520-Medium Flow	A- Seattle	A60877	ER Truck -- ERT	Available
Calibration	Defender 520-Medium Flow	A- Seattle	A95137	Level A Truck -- LAT	Available
Calibration	Defender 520-Medium Flow	A- Seattle	A95138	CR1-R9A	Checked out
Calibration	Defender 520-Medium Flow	B-Anchorage	A60881	H-3	Available
Calibration	Defender 520-Medium Flow	Portland	A60879	PERT	Available
Calibration	DeltaCal DC1 Flow Calibrator	A- Seattle	SB6171	CR1-R7A	Available
Calibration	DeltaCal DC1 Flow Calibrator	A- Seattle	SB7012	CR1-R8A	Available
Calibration	DeltaCal DC1 Flow Calibrator	Portland	SB6170	Warehouse - General	Available
Calibration	Dry-Cal DC Lite DCL-H Flow Calibrator	A- Seattle	A59919	CR1-R9A	Checked out
Calibration	Dry-Cal DC Lite DCL-H Flow Calibrator	B-Anchorage	A59921	I-2	Available
Calibration	Dry-Cal DC Lite DCL-H Flow Calibrator	Portland	A59920	Equipment Room	Available
Calibration	Dry-Cal DC Lite DCL-MH Flow Calibrator	A- Seattle	A59907	CR1-R9A	Available
Calibration	Dry-Cal DC Lite DCL-MH Flow Calibrator	B-Anchorage	A59887	I-2	Available
Calibration	Dry-Cal DC Lite DCL-MH Flow Calibrator	Portland	A59289	Equipment Room	Available
Calibration	Hi Vol Flow Calibration Kit (no model number)	A- Seattle	645455	CR1-R7A	Available
Calibration	Manometer (no model number)	A- Seattle	A59272	CR1-R9B	Available
Calibration	P25 Repeater	A- Seattle	A60809	B2-24D	Available
Calibration	PUF Flow Calibration Kit (no model number)	A- Seattle	645427	CR1-R7A	Available
Chem. Agent Detection	AP2Ce Chemical Agent Monitor	A- Seattle	A60793	Level A Truck -- LAT	Available
Chem. Agent Detection	AP2Ce Chemical Agent Monitor	B-Anchorage	A59310	J-2	Available
Chem. Agent Detection	AP2Ce Chemical Agent Monitor	Portland	A59309	PERT	Available
Chem. Agent Detection	AP4C Chemical Agent Monitor	A- Seattle	A60865	ER Truck -- ERT	Available
Chem. Agent Detection	APD 2000 Chemical Agent Monitor	A- Seattle	A25357	CR2-R9A	Decommissioned
Chem. Agent Detection	APD 2000 Chemical Agent Monitor	A- Seattle	A25846	CR2-R9A	Decommissioned
Chem. Agent Detection	First Defender	A- Seattle	A60702	ER Truck -- ERT	Available
Chem. Agent Detection	Hapsite	A- Seattle	828443	Lab Truck	Available
Chem. Agent Detection	Hapsite	A- Seattle	828444	Lab Truck	Available
Chem. Agent Detection	Hapsite	A- Seattle	828445	Lab Truck	Available
Chem. Agent Detection	Hapsite	A- Seattle	A59817	Lab Truck	Available

Chem. Agent Detection	HazCat Kit KT 1006	A- Seattle	645448	Corrosive Cabinet	Available
Chem. Agent Detection	HazCat Kit KT 1006	A- Seattle	A59766	Level A Truck -- LAT	Available
Chem. Agent Detection	HazCat Kit KT 1006	A- Seattle	A59767	ER Truck -- ERT	Available
Chem. Agent Detection	HazCat Kit KT 1006	B-Anchorage	724766	G-2	Available
Chem. Agent Detection	HazMatID	A- Seattle	A59923	ER Truck -- ERT	Available
Chem. Agent Detection	SRI 8610C Gas Chromatograph	A- Seattle	C13209	CR1-R4Floor	Available
Chem. Agent Detection	TruDefender FT	A- Seattle	A95139	Level A Truck -- LAT	Available
Chem. Agent Detection	WMD Kit KT 1035	A- Seattle	A59763	Corrosive Cabinet	Available
Chem. Agent Detection	WMD Kit KT 1035	A- Seattle	A59765	Corrosive Cabinet	Available
Chem. Agent Detection	WMD Kit KT 1035	B-Anchorage	A59764	K-2	Available
Communications	Amplifier (no model number	B-Anchorage	A94789	Main Bay	Available
Communications	Aquos TV 42 inch Flat Screen	B-Anchorage	A94785	Conference Room	Available
Communications	E-Z Radiocom I	A- Seattle	A59988	CR2-R1A	Available
Communications	E-Z Radiocom I	A- Seattle	A59989	CR2-R1A	Available
Communications	E-Z Radiocom I	A- Seattle	A59990	CR2-R1A	Available
Communications	E-Z Radiocom I	A- Seattle	A59991	CR2-R1A	Available
Communications	E-Z Radiocom I	A- Seattle	A60801	CR2-R1A	Available
Communications	E-Z Radiocom I	A- Seattle	A60802	CR2-R1A	Available
Communications	E-Z Radiocom I	A- Seattle	A60803	CR2-R1A	Available
Communications	E-Z Radiocom I	A- Seattle	A60804	CR2-R1A	Available
Communications	E-Z Radiocom II	A- Seattle	A60839	CR2-R1A	Available
Communications	E-Z Radiocom II	A- Seattle	A60840	CR2-R1A	Available
Communications	E-Z Radiocom II	A- Seattle	A60841	CR2-R1A	Available
Communications	E-Z Radiocom II	A- Seattle	A60842	CR2-R1A	Available
Communications	E-Z Radiocom II	A- Seattle	A60843	CR2-R1A	Available
Communications	E-Z Radiocom II	A- Seattle	A60844	CR2-R1A	Available
Communications	E-Z Radiocom II	A- Seattle	A60845	CR2-R1A	Available
Communications	E-Z Radiocom II	A- Seattle	A60846	CR2-R1A	Available
Communications	Envoy Radiocom	A- Seattle	A59768	Level A Truck -- LAT	Available
Communications	Envoy Radiocom	A- Seattle	A59769	Level A Truck -- LAT	Available
Communications	Envoy Radiocom	A- Seattle	A59770	Level A Truck -- LAT	Available
Communications	Envoy Radiocom	A- Seattle	A59771	Level A Truck -- LAT	Available
Communications	Envoy Radiocom	A- Seattle	A59772	Level A Truck -- LAT	Available
Communications	Envoy Radiocom	A- Seattle	A59773	Level A Truck -- LAT	Available
Communications	Envoy Radiocom	A- Seattle	A59774	CR2-R1A	Available
Communications	Envoy Radiocom	A- Seattle	A59775	CR2-R1A	Available
Communications	Envoy Radiocom	A- Seattle	A59776	CR2-R1A	Available
Communications	Envoy Radiocom	A- Seattle	A59802	CR2-R1A	Decommissioned
Communications	Envoy Radiocom	A- Seattle	A59803	ER Truck -- ERT	Available
Communications	Envoy Radiocom	A- Seattle	A59804	ER Truck -- ERT	Available
Communications	Envoy Radiocom	A- Seattle	A59859	ER Truck -- ERT	Available
Communications	Envoy Radiocom	A- Seattle	A59862	ER Truck -- ERT	Available
Communications	Envoy Radiocom	A- Seattle	A59863	CR2-R1A	Available
Communications	Envoy Radiocom	A- Seattle	A59864	CR2-R1A	Available
Communications	Envoy Radiocom	A- Seattle	A59865	CR2-R1A	Available
Communications	Envoy Radiocom	A- Seattle	A59866	CR2-R1A	Available



Communications	Envoy Radiocom	A- Seattle	A59867	CR2-R1A	Available
Communications	Envoy Radiocom	A- Seattle	A59868	CR2-R1A	Available
Communications	Envoy Radiocom	B-Anchorage	A59805	Comms Room	Available
Communications	Envoy Radiocom	B-Anchorage	A59806	Comms Room	Available
Communications	Envoy Radiocom	B-Anchorage	A59807	Comms Room	Available
Communications	Envoy Radiocom	B-Anchorage	A59808	Comms Room	Available
Communications	Envoy Radiocom	B-Anchorage	A59860	Comms Room	Available
Communications	Envoy Radiocom	B-Anchorage	A59861	Comms Room	Available
Communications	Envoy Radiocom	Portland	A59777	PERT	Available
Communications	Envoy Radiocom	Portland	A59778	PERT	Available
Communications	Envoy Radiocom	Portland	A59779	PERT	Available
Communications	Envoy Radiocom	Portland	A59780	PERT	Available
Communications	Extreme 9575 Satellite Phone	A- Seattle	S85512	Level A Truck -- LAT	Available
Communications	Extreme 9575 Satellite Phone	A- Seattle	S85513	ER Truck -- ERT	Available
Communications	Extreme 9575 Satellite Phone	B-Anchorage	S85509	Comms Room	Available
Communications	Extreme 9575 Satellite Phone	B-Anchorage	S85510	Comms Room	Available
Communications	Extreme 9575 Satellite Phone	B-Anchorage	S85511	Comms Room	Available
Communications	Extreme 9575 Satellite Phone	Portland	S85520	PERT	Available
Communications	HT1250 Portable Radio	A- Seattle	A59816	Level A Truck -- LAT	Available
Communications	HT1250 Portable Radio	A- Seattle	A59818	Level A Truck -- LAT	Available
Communications	HT1250 Portable Radio	A- Seattle	A59819	Level A Truck -- LAT	Available
Communications	HT1250 Portable Radio	A- Seattle	A59820	Level A Truck -- LAT	Available
Communications	HT1250 Portable Radio	A- Seattle	A59821	Level A Truck -- LAT	Available
Communications	HT1250 Portable Radio	A- Seattle	A59822	Level A Truck -- LAT	Available
Communications	HT1250 Portable Radio	A- Seattle	A59823	ER Truck -- ERT	Available
Communications	HT1250 Portable Radio	A- Seattle	A59824	ER Truck -- ERT	Available
Communications	HT1250 Portable Radio	A- Seattle	A59825	ER Truck -- ERT	Available
Communications	HT1250 Portable Radio	A- Seattle	A59826	ER Truck -- ERT	Available
Communications	HT1250 Portable Radio	A- Seattle	A59827	ER Truck -- ERT	Available
Communications	HT1250 Portable Radio	A- Seattle	A59828	ER Truck -- ERT	Available
Communications	HT1250 Portable Radio	A- Seattle	A59829	Mobile Command Post (MCP)	Checked out
Communications	HT1250 Portable Radio	A- Seattle	A59830	Mobile Command Post (MCP)	Checked out
Communications	HT1250 Portable Radio	A- Seattle	A59831	Mobile Command Post (MCP)	Checked out
Communications	HT1250 Portable Radio	A- Seattle	A59832	Mobile Command Post (MCP)	Checked out
Communications	HT1250 Portable Radio	A- Seattle	A59833	Mobile Command Post (MCP)	Checked out
Communications	HT1250 Portable Radio	A- Seattle	A59834	Mobile Command Post (MCP)	Checked out
Communications	HT1250 Portable Radio	A- Seattle	A59992	Mobile Command Post (MCP)	Available
Communications	HT1250 Portable Radio	A- Seattle	A59993	EPA Office -- J. Rodin	Reserved
Communications	HT1250 Portable Radio	B-Anchorage	A59843	Comms Room	Available
Communications	HT1250 Portable Radio	B-Anchorage	A59844	Comms Room	Available
Communications	HT1250 Portable Radio	B-Anchorage	A59845	Comms Room	Available
Communications	HT1250 Portable Radio	B-Anchorage	A59846	Comms Room	Available
Communications	HT1250 Portable Radio	B-Anchorage	A59847	Comms Room	Available
Communications	HT1250 Portable Radio	B-Anchorage	A59848	Comms Room	Available
Communications	HT1250 Portable Radio	B-Anchorage	A59849	Comms Room	Available
Communications	HT1250 Portable Radio	B-Anchorage	A59850	Comms Room	Available
Communications	HT1250 Portable Radio	Portland	A59835	PERT	Available
Communications	HT1250 Portable Radio	Portland	A59836	PERT	Available



Communications	HT1250 Portable Radio	Portland	A59838	PERT	Available
Communications	HT1250 Portable Radio	Portland	A59839	PERT	Available
Communications	HT1250 Portable Radio	Portland	A59841	PERT	Available
Communications	HT1250 Portable Radio	Portland	A59842	PERT	Available
Communications	JT1000 Portable Radio	A- Seattle	897848	CR2-R1A	Available
Communications	JT1000 Portable Radio	A- Seattle	897849	CR2-R1A	Available
Communications	Mobile Satellite Dish (no model number)	A- Seattle	A60820	Bay 1	Available
Communications	Mobile Satellite Dish (no model number)	A- Seattle	A93638	Mobile Command Post (MCP)	Available
Communications	Mobile Satellite Dish (no model number)	B-Anchorage	A94788	Mobile Command Post	Available
Communications	NGT ASR Transceiver	B-Anchorage	A94787	Comms Room	Available
Communications	Overhead Projector (no model number)	B-Anchorage	A94786	Conference Room	Available
Communications	Overhead Projector (no model number)	Portland	A95120	Training Room	Available
Communications	Quantar Portable Radio	A- Seattle	897851	B2-17D	Available
Communications	Quantar Repeater	A- Seattle	897850	B2-17D	Available
Communications	Solar Panel (no model number)	A- Seattle	A60808	B2-24D	Available
Communications	TV 20-inch	B-Anchorage	A25861	OSC Office	Available
Communications	TV 27-inch	B-Anchorage	A59972	Near Balcony Door	Available
Communications	Video Camera, Digital (no model number)	A- Seattle	A95121	ER Truck -- ERT	Available
Communications	Video Camera, Digital (no model number)	A- Seattle	A95122	Level A Truck -- LAT	Available
Communications	W1200 Digital Projector	A- Seattle	SB6183	Training Room	Available
Communications	XTS 5000 Portable Radio	B-Anchorage	A94700	Comms Room	Available
Communications	XTS 5000 Portable Radio	B-Anchorage	A94701	Comms Room	Available
Computer/ Documentation	35 mm Camera (no model number)	A- Seattle	897922	CR2-R1A	Available
Computer/ Documentation	35 mm Camera (no model number)	A- Seattle	897923	CR2-R1A	Available
Computer/ Documentation	35 mm Camera (no model number)	A- Seattle	897925	CR2-R1A	Available
Computer/ Documentation	All-in-One Printer (no model number)	A- Seattle	SB7079	CR2-R1Floor	Available
Computer/ Documentation	CoolPix AW110 Digital Camera	A- Seattle	SB7037	ER Truck -- ERT	Available
Computer/ Documentation	CoolPix AW110 Digital Camera	A- Seattle	SB7038	Level A Truck -- LAT	Available
Computer/ Documentation	CoolPix AW110 Digital Camera	A- Seattle	SB7048	CR2-R1A	Checked out
Computer/ Documentation	CoolPix AW110 Digital Camera	A- Seattle	SB7049	CR2-R1A	Available
Computer/ Documentation	CoolPix AW110 Digital Camera	Portland	SB7039	PERT	Available
Computer/ Documentation	Desktop Computer (no model number)	A- Seattle	SB7075	Lab Truck	Available
Computer/ Documentation	Digital Camera (no model number)	A- Seattle	S52463	CR1-R1A	Checked out
Computer/ Documentation	Digital Camera (no model number)	A- Seattle	SB7077	CR2-R1A	Available
Computer/ Documentation	Digital Camera (no model number)	A- Seattle	SB7078	CR2-R1A	Checked out
Computer/ Documentation	HP EliteBook 2450P Laptop	A- Seattle	S52345	Training Room	Needs Service
Computer/ Documentation	HP EliteBook 2450P Laptop	A- Seattle	S78977	Training Room	Needs Service

Computer/ Documentation	HP EliteBook 2450P Laptop	A- Seattle	S78978	ER Truck -- ERT	Available
Computer/ Documentation	HP EliteBook 2450P Laptop	A- Seattle	S78983	Training Room	Needs Service
Computer/ Documentation	HP EliteBook 2450P Laptop	A- Seattle	S78984	Training Room	Needs Service
Computer/ Documentation	HP EliteBook 2450P Laptop	A- Seattle	S78985	Training Room	Needs Service
Computer/ Documentation	HP EliteBook 2450P Laptop	A- Seattle	S78986	CR2-R1B	Available
Computer/ Documentation	HP EliteBook 2450P Laptop	A- Seattle	S78988	Mobile Command Post (MCP)	Checked out
Computer/ Documentation	HP EliteBook 2450P Laptop	A- Seattle	S78990	Level A Truck -- LAT	Available
Computer/ Documentation	HP EliteBook 2450P Laptop	A- Seattle	S78995	Training Room	Needs Service
Computer/ Documentation	HP EliteBook 2450P Laptop	A- Seattle	S78996	Training Room	Needs Service
Computer/ Documentation	HP EliteBook 2450P Laptop	A- Seattle	S79000	CR1-R2Floor	Available
Computer/ Documentation	HP EliteBook 2450P Laptop	A- Seattle	SB8580	CR2-R1B	Available
Computer/ Documentation	HP EliteBook 2450P Laptop	B-Anchorage	S78979	J-3	Available
Computer/ Documentation	HP EliteBook 2450P Laptop	B-Anchorage	S78994	J-4	Available
Computer/ Documentation	HP EliteBook 2450P Laptop	Portland	S78980	PERT	Available
Computer/ Documentation	Inspiron N5050 Laptop Computer	A- Seattle	SB6202	Level A Truck -- LAT	Available
Computer/ Documentation	Inspiron N5050 Laptop Computer	A- Seattle	SB6208	CR1-R1Floor	Checked out
Computer/ Documentation	Laptop Computer (no model number)	A- Seattle	A59869	Level A Truck -- LAT	Available
Computer/ Documentation	LaserJet CP3525dn Color Printer	A- Seattle	SB6173	Front Office	Available
Computer/ Documentation	LaserJet M1522N Printer	A- Seattle	A60873	Mobile Command Post (MCP)	Available
Computer/ Documentation	LaserJet M1522N Printer	B-Anchorage	A60871	Computer/ Gear Room	Available
Computer/ Documentation	LaserJet M1522N Printer	Portland	A60872	Equipment Room	Available
Computer/ Documentation	LaserJet Pro 400MFP	A- Seattle	SB7009	Front Office	Available
Computer/ Documentation	LaserJet Pro 400MFP	B-Anchorage	SB7014	WES office	Available
Computer/ Documentation	LaserJet Pro 400MFP	Portland	SB7013	Warehouse - General	Available
Computer/ Documentation	Laserjet M1210 NFW MFP	A- Seattle	SB6196	Lab Truck	Available
Computer/ Documentation	Latitude D630	A- Seattle	S52654	Lab Truck	Decommissioned
Computer/ Documentation	Latitude D630	A- Seattle	S61457	CR2-R1B	Decommissioned
Computer/ Documentation	MC659B Scanner	A- Seattle	SB6190	Front Office	Available

Computer/ Documentation	MC659B Scanner	Portland	SB6191	Warehouse - General	Available
Computer/ Documentation	PSC 2200 Printer	B-Anchorage	A59971	Conference Room	Available
Computer/ Documentation	Pro Image 3000 Poster Printer	A- Seattle	A95078	Mobile Command Post (MCP)	Available
Computer/ Documentation	Rack Station 4-Bay Network Attached Storage RS815	A- Seattle	SB7082	Training Room	Available
Computer/ Documentation	Rack Station 4-Bay Network Attached Storage RS815	A- Seattle	SB7088	Front Office	Available
Computer/ Documentation	Rack Station 4-Bay Network Attached Storage RS815	A- Seattle	SB7090	Front Office	Available
Computer/ Documentation	Rack Station 4-Bay Network Attached Storage RS815	Portland	SB7089	Deployment to Seattle	Available
Computer/ Documentation	SAM 935 Printer	A- Seattle	A59271	CR2-R9A	Available
Computer/ Documentation	Scanner (no model number)	A- Seattle	SB7076	EPA Office -- EPA	Available
Computer/ Documentation	Synology Network Attached Storage (NAS), DS216+ Disk Station	A- Seattle	SB7086	Lab Truck	Available
Computer/ Documentation	Synology Network Attached Storage (NAS), DS216+ Disk Station	A- Seattle	SB7087	ER Truck -- ERT	Available
Computer/ Documentation	Vostro 430 Mini Tower Computer	A- Seattle	SB6174	Front Office	Available
Gas/ Vapor Detection	800 Hand Pump	B-Anchorage	A59891	J-4	Available
Gas/ Vapor Detection	800 Hand Pump	Portland	A59903	PERT	Available
Gas/ Vapor Detection	Accuro Hand Pump	A- Seattle	609257	CR1-R1A	Available
Gas/ Vapor Detection	Accuro Hand Pump	A- Seattle	697102	Level A Truck -- LAT	Available
Gas/ Vapor Detection	Accuro Hand Pump	A- Seattle	734063	ER Truck -- ERT	Available
Gas/ Vapor Detection	Accuro Hand Pump	B-Anchorage	697096	J-4	Available
Gas/ Vapor Detection	Accuro Hand Pump	B-Anchorage	897747	J-4	Available
Gas/ Vapor Detection	AreaRAE Rapid Deployment Kit	A- Seattle	A59870	Level A Truck -- LAT	Available
Gas/ Vapor Detection	AreaRAE Rapid Deployment Kit	A- Seattle	A59871	Level A Truck -- LAT	Available
Gas/ Vapor Detection	AreaRAE Rapid Deployment Kit	A- Seattle	A59872	Level A Truck -- LAT	Available
Gas/ Vapor Detection	AreaRAE Rapid Deployment Kit	A- Seattle	A59873	ER Truck -- ERT	Available
Gas/ Vapor Detection	AreaRAE Rapid Deployment Kit	A- Seattle	A60701	ER Truck -- ERT	Available
Gas/ Vapor Detection	AreaRAE Rapid Deployment Kit	A- Seattle	A60703	ER Truck -- ERT	Available
Gas/ Vapor Detection	AreaRAE Rapid Deployment Kit	B-Anchorage	A59978	I-3	Available
Gas/ Vapor Detection	AreaRAE Rapid Deployment Kit	B-Anchorage	A59979	I-3	Available
Gas/ Vapor Detection	AreaRAE Rapid Deployment Kit	B-Anchorage	A59980	I-3	Available

Gas/ Vapor Detection	AreaRAE Rapid Deployment Kit	Portland	A59981	PERT	Available
Gas/ Vapor Detection	AreaRAE Rapid Deployment Kit	Portland	A59982	PERT	Available
Gas/ Vapor Detection	AreaRAE Rapid Deployment Kit	Portland	A59983	PERT	Available
Gas/ Vapor Detection	CMS Analyzer	A- Seattle	A59900	Level A Truck -- LAT	Available
Gas/ Vapor Detection	CMS Analyzer	A- Seattle	A59906	ER Truck -- ERT	Available
Gas/ Vapor Detection	CMS Analyzer	B-Anchorage	A59886	J-4	Available
Gas/ Vapor Detection	CMS Analyzer	Portland	897918	PERT	Available
Gas/ Vapor Detection	Jerome 431-X	A- Seattle	724776	CR1-R1A	Available
Gas/ Vapor Detection	Jerome 431-X	A- Seattle	A59293	ER Truck -- ERT	Available
Gas/ Vapor Detection	Jerome 431-X	B-Anchorage	A59295	G-3	Available
Gas/ Vapor Detection	Jerome 431-X	B-Anchorage	A59888	G-3	Available
Gas/ Vapor Detection	Jerome 431-X	Portland	A59294	PERT	Available
Gas/ Vapor Detection	Jerome/J505	A- Seattle	SB7083	ER Truck -- ERT	Available
Gas/ Vapor Detection	Laptop Computer (no model number)	A- Seattle	A59869	Level A Truck -- LAT	Available
Gas/ Vapor Detection	Lumex RA-915+	A- Seattle	A59656	CR1-R1A	Checked out
Gas/ Vapor Detection	Lumex RA-915+	A- Seattle	A60704	ER Truck -- ERT	Available
Gas/ Vapor Detection	Multi Warn II	A- Seattle	A59929	CR1-R1A	Decommissioned
Gas/ Vapor Detection	Multi Warn II	A- Seattle	A59930	CR1-R1A	Decommissioned
Gas/ Vapor Detection	Multi Warn II	B-Anchorage	A59928	- - -	Decommissioned
Gas/ Vapor Detection	MultiRae Pro PGM-6248	A- Seattle	SB6192	ER Truck -- ERT	Available
Gas/ Vapor Detection	MultiRae Pro PGM-6248	A- Seattle	SB6193	CR1-R1A	Checked out
Gas/ Vapor Detection	MultiRae Pro PGM-6248	A- Seattle	SB7022	Level A Truck -- LAT	Checked out
Gas/ Vapor Detection	MultiRae Pro PGM-6248	A- Seattle	SB7023	ER Truck -- ERT	Available
Gas/ Vapor Detection	MultiRae Pro PGM-6248	A- Seattle	SB7057	ER Truck -- ERT	Available
Gas/ Vapor Detection	MultiRae Pro PGM-6248	A- Seattle	SB7058	Level A Truck -- LAT	Available
Gas/ Vapor Detection	MultiRae Pro PGM-6248	A- Seattle	SB7059	ER Truck -- ERT	Available
Gas/ Vapor Detection	MultiRae Pro PGM-6248	B-Anchorage	SB7021	I-2	Available
Gas/ Vapor Detection	MultiRae Pro PGM-6248	Portland	SB7020	PERT	Available

Gas/ Vapor Detection	PAC 7000 Single Gas Monitor	A- Seattle	SB6141	ER Truck -- ERT	Available
Gas/ Vapor Detection	PAC 7000 Single Gas Monitor	A- Seattle	SB6142	Level A Truck -- LAT	Available
Gas/ Vapor Detection	PAC 7000 Single Gas Monitor	A- Seattle	SB6145	ER Truck -- ERT	Available
Gas/ Vapor Detection	PAC 7000 Single Gas Monitor	A- Seattle	SB6146	Level A Truck -- LAT	Available
Gas/ Vapor Detection	PAC 7000 Single Gas Monitor	A- Seattle	SB6154	ER Truck -- ERT	Available
Gas/ Vapor Detection	PAC 7000 Single Gas Monitor	A- Seattle	SB7046	Level A Truck -- LAT	Available
Gas/ Vapor Detection	PAC 7000 Single Gas Monitor	B-Anchorage	SB6143	J-4	Available
Gas/ Vapor Detection	PAC 7000 Single Gas Monitor	B-Anchorage	SB6147	J-4	Available
Gas/ Vapor Detection	PAC 7000 Single Gas Monitor	B-Anchorage	SB6156	J-4	Available
Gas/ Vapor Detection	PAC 7000 Single Gas Monitor	Portland	SB6144	PERT	Available
Gas/ Vapor Detection	PAC 7000 Single Gas Monitor	Portland	SB6148	PERT	Available
Gas/ Vapor Detection	PAC 7000 Single Gas Monitor	Portland	SB6157	PERT	Available
Gas/ Vapor Detection	PAC III Single Gas Monitor	A- Seattle	A59899	Boise - Greg Weigel	Available
Gas/ Vapor Detection	PAC III Single Gas Monitor	A- Seattle	A59904	Boise - Greg Weigel	Available
Gas/ Vapor Detection	PAC III Single Gas Monitor	A- Seattle	A59905	ER Truck -- ERT	Available
Gas/ Vapor Detection	PAC III Single Gas Monitor	A- Seattle	A59918	Level A Truck -- LAT	Available
Gas/ Vapor Detection	Quantimeter 1000 Pump	A- Seattle	A60874	ER Truck -- ERT	Available
Gas/ Vapor Detection	Quantimeter 1000 Pump	A- Seattle	A95127	Level A Truck -- LAT	Available
Gas/ Vapor Detection	Quantimeter 1000 Pump	A- Seattle	A95128	- - -	Decommissioned
Gas/ Vapor Detection	Quantimeter 1000 Pump	B-Anchorage	A60876	J-3	Available
Gas/ Vapor Detection	Quantimeter 1000 Pump	B-Anchorage	A95129	J-3	Available
Gas/ Vapor Detection	Quantimeter 1000 Pump	Portland	A60875	PERT	Available
Gas/ Vapor Detection	RAELink2 Wireless Repeater	A- Seattle	A59975	ER Truck -- ERT	Available
Gas/ Vapor Detection	RAELink2 Wireless Transceiver	A- Seattle	A60720	ER Truck -- ERT	Available
Gas/ Vapor Detection	RAELink2 Wireless Transceiver	B-Anchorage	A59976	I-2	Available
Gas/ Vapor Detection	RAELink2 Wireless Transceiver	Portland	A59977	PERT	Available
Gas/ Vapor Detection	RP-91 Liquid Attachment	A- Seattle	A59657	CR1-R1A	Available
Gas/ Vapor Detection	RP-91 Liquid Attachment	A- Seattle	A60705	CR1-R1A	Available

Gas/ Vapor Detection	RP-91C Solid Attachment	A- Seattle	A59881	CR1-R1A	Available
Gas/ Vapor Detection	RP-91C Solid Attachment	A- Seattle	A60706	CR1-R1A	Available
Gas/ Vapor Detection	RP-M324 Attachment	A- Seattle	A95125	CR1-R1Floor	Available
Gas/ Vapor Detection	Refrigerant Leak Detector (no model number)	A- Seattle	897911	ER Truck -- ERT	Available
Gas/ Vapor Detection	SensorRAE	A- Seattle	SB7001	Level A Truck -- LAT	Available
Gas/ Vapor Detection	SensorRAE	A- Seattle	SB7002	ER Truck -- ERT	Available
Gas/ Vapor Detection	SensorRAE	B-Anchorage	SB7004	I-2	Available
Gas/ Vapor Detection	SensorRAE	B-Anchorage	SB7066	I-2	Available
Gas/ Vapor Detection	SensorRAE	Portland	SB7003	PERT	Checked out
Gas/ Vapor Detection	SensorRAE	Portland	SB7065	PERT	Available
Gas/ Vapor Detection	SensorRAE 4R+	A- Seattle	SB6194	ER Truck -- ERT	Available
Gas/ Vapor Detection	SensorRAE 4R+	A- Seattle	SB6195	Level A Truck -- LAT	Available
Gas/ Vapor Detection	SensorRAE 4R+	B-Anchorage	SB7019	I-2	Available
Gas/ Vapor Detection	SensorRAE 4R+	Portland	SB7018	PERT	Available
Gas/ Vapor Detection	TVA 1000B PID/FID Combination Detector	A- Seattle	897674	CR1-R1A	Available
Gas/ Vapor Detection	TVA 1000B PID/FID Combination Detector	A- Seattle	897675	Level A Truck -- LAT	Available
Gas/ Vapor Detection	TVA 1000B PID/FID Combination Detector	A- Seattle	A59290	ER Truck -- ERT	Available
Gas/ Vapor Detection	TVA 1000B PID/FID Combination Detector	B-Anchorage	A59292	G-2	Available
Gas/ Vapor Detection	TVA 1000B PID/FID Combination Detector	Portland	897895	Equipment Trailer -- EQT	Available
Gas/ Vapor Detection	TVA 1000B PID/FID Combination Detector	Portland	A59291	PERT	Available
Gas/ Vapor Detection	UltraRAE 3000	A- Seattle	SB7015	ER Truck -- ERT	Available
Gas/ Vapor Detection	UltraRAE 3000	A- Seattle	SB7016	Level A Truck -- LAT	Available
Gas/ Vapor Detection	UltraRAE 3000	B-Anchorage	SB6189	J-4	Available
Gas/ Vapor Detection	UltraRAE 3000	Portland	SB7017	PERT	Available
Health/ First Aid	AC-94 Noise Dosimeter	A- Seattle	897915	CR2-R7B	Available
Health/ First Aid	Blood Pressure Monitor (no model number)	A- Seattle	313563	CR2-R7B	Available
Health/ First Aid	Edge eg5 Audio Dosimeter	A- Seattle	A95126	CR2-R7B	Available
Health/ First Aid	Eye Wash Station (no model number)	Portland	190998	Warehouse - General	Available
Health/ First Aid	Fire Blanket (no model number)	A- Seattle	466022	Bay 1	Available
Health/ First Aid	HeartStart HS1 AED	A- Seattle	A60847	ER Truck -- ERT	Available
Health/ First Aid	HeartStart HS1 AED	A- Seattle	A60848	Mobile Command Post (MCP)	Available

Health/ First Aid	HeartStart HS1 AED	A- Seattle	A60849	Level A Truck -- LAT	Available
Health/ First Aid	HeartStart HS1 AED	A- Seattle	SB6184	Comms Truck	Checked out
Health/ First Aid	HeartStart HS1 AED	A- Seattle	SB6185	Front Office	Available
Health/ First Aid	HeartStart HS1 AED	B-Anchorage	A60851	START Truck	Available
Health/ First Aid	HeartStart HS1 AED	Portland	A60850	PERT	Available
PPE	804723-01 Cylinder	A- Seattle	A59147	ER Truck -- ERT	Available
PPE	804723-01 Cylinder	A- Seattle	A59218	Cyl Cart 1	Checked out
PPE	804723-01 Cylinder	A- Seattle	A59219	ER Truck -- ERT	Available
PPE	804723-01 Cylinder	A- Seattle	A59220	ER Truck -- ERT	Available
PPE	804723-01 Cylinder	A- Seattle	A59221	ER Truck -- ERT	Available
PPE	804723-01 Cylinder	A- Seattle	A59222	Cyl Cart 1	Checked out
PPE	804723-01 Cylinder	A- Seattle	A59223	ER Truck -- ERT	Available
PPE	804723-01 Cylinder	A- Seattle	A59224	ER Truck -- ERT	Available
PPE	804723-01 Cylinder	A- Seattle	A59225	ER Truck -- ERT	Available
PPE	804723-01 Cylinder	A- Seattle	A59226	ER Truck -- ERT	Available
PPE	804723-01 Cylinder	A- Seattle	A59312	Level A Truck -- LAT	Available
PPE	804723-01 Cylinder	A- Seattle	A59314	Level A Truck -- LAT	Available
PPE	804723-01 Cylinder	A- Seattle	A59316	Level A Truck -- LAT	Available
PPE	804723-01 Cylinder	A- Seattle	A59318	Level A Truck -- LAT	Available
PPE	804723-01 Cylinder	A- Seattle	A59320	Cyl Cart 1	Available
PPE	804723-01 Cylinder	A- Seattle	A59322	Level A Truck -- LAT	Available
PPE	804723-01 Cylinder	A- Seattle	A59324	Level A Truck -- LAT	Available
PPE	804723-01 Cylinder	A- Seattle	A59326	Cyl Cart 1	Available
PPE	804723-01 Cylinder	A- Seattle	A59328	Boise - Greg Weigel	Available
PPE	804723-01 Cylinder	A- Seattle	A59330	Boise - Greg Weigel	Available
PPE	804723-01 Cylinder	A- Seattle	A59648	Level A Truck -- LAT	Available
PPE	804723-01 Cylinder	A- Seattle	A59650	Level A Truck -- LAT	Available
PPE	804723-01 Cylinder	A- Seattle	A59652	Level A Truck -- LAT	Available
PPE	804723-01 Cylinder	A- Seattle	A59654	Level A Truck -- LAT	Available
PPE	804723-01 Cylinder	A- Seattle	A59730	Level A Truck -- LAT	Checked out
PPE	804723-01 Cylinder	A- Seattle	A59731	Cyl Cart 1	Available
PPE	804723-01 Cylinder	A- Seattle	A59732	Cyl Cart 1	Available
PPE	804723-01 Cylinder	A- Seattle	A59733	Cyl Cart 1	Available
PPE	804723-01 Cylinder	A- Seattle	A59734	Level A Truck -- LAT	Available
PPE	804723-01 Cylinder	A- Seattle	A59735	Level A Truck -- LAT	Checked out
PPE	804723-01 Cylinder	A- Seattle	A59736	Cyl Cart 1	Available
PPE	804723-01 Cylinder	A- Seattle	A59737	Cyl Cart 1	Checked out
PPE	804723-01 Cylinder	A- Seattle	A59738	Cyl Cart 1	Available
PPE	804723-01 Cylinder	A- Seattle	A59739	Cyl Cart 1	Available
PPE	804723-01 Cylinder	A- Seattle	A59740	Level A Truck -- LAT	Available
PPE	804723-01 Cylinder	A- Seattle	A59741	Cyl Cart 1	Checked out
PPE	804723-01 Cylinder	A- Seattle	A59742	Cyl Cart 1	Checked out
PPE	804723-01 Cylinder	A- Seattle	A59743	Cyl Cart 1	Available
PPE	804723-01 Cylinder	B-Anchorage	A59170	D-1	Available
PPE	804723-01 Cylinder	B-Anchorage	A59172	D-1	Available
PPE	804723-01 Cylinder	B-Anchorage	A59174	D-1	Available
PPE	804723-01 Cylinder	B-Anchorage	A59176	D-1	Available
PPE	804723-01 Cylinder	B-Anchorage	A59178	D-1	Available
PPE	804723-01 Cylinder	B-Anchorage	A59180	D-1	Available
PPE	804723-01 Cylinder	B-Anchorage	A59182	D-1	Available
PPE	804723-01 Cylinder	B-Anchorage	A59184	D-1	Available
PPE	804723-01 Cylinder	B-Anchorage	A59185	D-1	Available
PPE	804723-01 Cylinder	B-Anchorage	A59187	D-1	Available
PPE	804723-01 Cylinder	B-Anchorage	A59188	F-1	Available
PPE	804723-01 Cylinder	B-Anchorage	A59189	D-1	Available



PPE	804723-01 Cylinder	B-Anchorage	A59190	D-1	Available
PPE	804723-01 Cylinder	B-Anchorage	A59191	D-1	Available
PPE	804723-01 Cylinder	B-Anchorage	A59192	D-1	Available
PPE	804723-01 Cylinder	B-Anchorage	A59193	F-1	Available
PPE	804723-01 Cylinder	B-Anchorage	A59194	D-1	Available
PPE	804723-01 Cylinder	B-Anchorage	A59195	D-1	Available
PPE	804723-01 Cylinder	B-Anchorage	A59196	D-1	Available
PPE	804723-01 Cylinder	B-Anchorage	A59197	D-1	Available
PPE	804723-01 Cylinder	B-Anchorage	A59198	D-1	Available
PPE	804723-01 Cylinder	B-Anchorage	A59199	D-1	Available
PPE	804723-01 Cylinder	B-Anchorage	A59200	D-1	Available
PPE	804723-01 Cylinder	B-Anchorage	A59201	D-1	Available
PPE	804723-01 Cylinder	B-Anchorage	A59202	D-1	Available
PPE	804723-01 Cylinder	B-Anchorage	A59203	D-1	Available
PPE	804723-01 Cylinder	B-Anchorage	A59204	D-1	Available
PPE	804723-01 Cylinder	B-Anchorage	A59205	D-1	Available
PPE	804723-01 Cylinder	Portland	A59150	PERT	Available
PPE	804723-01 Cylinder	Portland	A59152	Training Room	Available
PPE	804723-01 Cylinder	Portland	A59154	Response Trailer	Checked out
PPE	804723-01 Cylinder	Portland	A59156	PERT	Available
PPE	804723-01 Cylinder	Portland	A59158	PERT	Available
PPE	804723-01 Cylinder	Portland	A59160	PERT	Available
PPE	804723-01 Cylinder	Portland	A59162	PERT	Available
PPE	804723-01 Cylinder	Portland	A59164	PERT	Available
PPE	804723-01 Cylinder	Portland	A59166	PERT	Available
PPE	804723-01 Cylinder	Portland	A59168	Response Trailer	Checked out
PPE	804723-01 Cylinder	Portland	A59206	Training Room	Available
PPE	804723-01 Cylinder	Portland	A59207	PERT	Available
PPE	804723-01 Cylinder	Portland	A59208	PERT	Available
PPE	804723-01 Cylinder	Portland	A59209	PERT	Available
PPE	804723-01 Cylinder	Portland	A59210	Warehouse - General	Available
PPE	804723-01 Cylinder	Portland	A59211	PERT	Checked out
PPE	804723-01 Cylinder	Portland	A59212	PERT	Available
PPE	804723-01 Cylinder	Portland	A59213	PERT	Available
PPE	804723-01 Cylinder	Portland	A59214	PERT	Available
PPE	804723-01 Cylinder	Portland	A59215	Training Room	Available
PPE	804723-01 Cylinder	Portland	A59216	Response Trailer	Checked out
PPE	804723-01 Cylinder	Portland	A59217	PERT	Available
PPE	Air-Pak Fifty 4.5 SCBA	A- Seattle	A59148	ER Truck -- ERT	Available
PPE	Air-Pak Fifty 4.5 SCBA	A- Seattle	A59149	ER Truck -- ERT	Available
PPE	Air-Pak Fifty 4.5 SCBA	A- Seattle	A59151	Level A Truck -- LAT	Available
PPE	Air-Pak Fifty 4.5 SCBA	A- Seattle	A59153	Level A Truck -- LAT	Available
PPE	Air-Pak Fifty 4.5 SCBA	A- Seattle	A59155	Level A Truck -- LAT	Available
PPE	Air-Pak Fifty 4.5 SCBA	A- Seattle	A59157	Level A Truck -- LAT	Checked out
PPE	Air-Pak Fifty 4.5 SCBA	A- Seattle	A59159	Level A Truck -- LAT	Checked out
PPE	Air-Pak Fifty 4.5 SCBA	A- Seattle	A59161	Level A Truck -- LAT	Available
PPE	Air-Pak Fifty 4.5 SCBA	A- Seattle	A59163	CR1-R2B	Available
PPE	Air-Pak Fifty 4.5 SCBA	A- Seattle	A59165	Level A Truck -- LAT	Available
PPE	Air-Pak Fifty 4.5 SCBA	A- Seattle	A59311	CR1-R3B	Available
PPE	Air-Pak Fifty 4.5 SCBA	A- Seattle	A59313	Level A Truck -- LAT	Available
PPE	Air-Pak Fifty 4.5 SCBA	A- Seattle	A59315	Level A Truck -- LAT	Available
PPE	Air-Pak Fifty 4.5 SCBA	A- Seattle	A59317	ER Truck -- ERT	Available
PPE	Air-Pak Fifty 4.5 SCBA	A- Seattle	A59319	ER Truck -- ERT	Available
PPE	Air-Pak Fifty 4.5 SCBA	A- Seattle	A59321	CR1-R3B	Checked out
PPE	Air-Pak Fifty 4.5 SCBA	A- Seattle	A59323	Level A Truck -- LAT	Available



PPE	Air-Pak Fifty 4.5 SCBA	A- Seattle	A59325	CR1-R3B	Available
PPE	Air-Pak Fifty 4.5 SCBA	A- Seattle	A59327	CR1-R3B	Available
PPE	Air-Pak Fifty 4.5 SCBA	A- Seattle	A59329	Boise - Greg Weigel	Available
PPE	Air-Pak Fifty 4.5 SCBA	B-Anchorage	A59177	F-1	Available
PPE	Air-Pak Fifty 4.5 SCBA	B-Anchorage	A59179	F-1	Available
PPE	Air-Pak Fifty 4.5 SCBA	B-Anchorage	A59181	F-2	Available
PPE	Air-Pak Fifty 4.5 SCBA	B-Anchorage	A59183	L-2	Available
PPE	Air-Pak Fifty 4.5 SCBA	B-Anchorage	A59186	F-2	Available
PPE	Air-Pak Fifty 4.5 SCBA	B-Anchorage	A59649	F-1	Available
PPE	Air-Pak Fifty 4.5 SCBA	B-Anchorage	A59651	F-2	Available
PPE	Air-Pak Fifty 4.5 SCBA	B-Anchorage	A59653	F-2	Available
PPE	Air-Pak Fifty 4.5 SCBA	Portland	A59167	PERT	Available
PPE	Air-Pak Fifty 4.5 SCBA	Portland	A59169	PERT	Available
PPE	Air-Pak Fifty 4.5 SCBA	Portland	A59171	PERT	Available
PPE	Air-Pak Fifty 4.5 SCBA	Portland	A59173	PERT	Available
PPE	Air-Pak Fifty 4.5 SCBA	Portland	A59175	PERT	Available
PPE	Air-Pak Fifty 4.5 SCBA	Portland	A59655	PERT	Available
PPE	C420 PAPR	A- Seattle	A59227	CR1-R3A	Available
PPE	C420 PAPR	A- Seattle	A59228	CR1-R3A	Available
PPE	C420 PAPR	A- Seattle	A59229	CR1-R2A	Available
PPE	C420 PAPR	A- Seattle	A59230	CR1-R2A	Available
PPE	C420 PAPR	A- Seattle	A59231	CR1-R2A	Available
PPE	C420 PAPR	A- Seattle	A59232	CR1-R2A	Available
PPE	C420 PAPR	A- Seattle	A59233	CR1-R3A	Available
PPE	C420 PAPR	A- Seattle	A59234	CR1-R3A	Available
PPE	C420 PAPR	A- Seattle	A59235	CR1-R3A	Available
PPE	C420 PAPR	A- Seattle	A59236	CR1-R3A	Available
PPE	C420 PAPR	A- Seattle	A59237	CR1-R2A	Available
PPE	C420 PAPR	A- Seattle	A59238	CR1-R2A	Available
PPE	C420 PAPR	A- Seattle	A59239	CR1-R3A	Available
PPE	C420 PAPR	A- Seattle	A59240	CR1-R3A	Available
PPE	C420 PAPR	A- Seattle	A59241	CR1-R2A	Available
PPE	C420 PAPR	A- Seattle	A59242	CR1-R2A	Available
PPE	C420 PAPR	B-Anchorage	A59245	E-3	Available
PPE	C420 PAPR	B-Anchorage	A59279	E-3	Available
PPE	C420 PAPR	Portland	A59243	Response Trailer	Available
PPE	C420 PAPR	Portland	A59244	Response Trailer	Available
PPE	C420 Plus CBRN PAPR	A- Seattle	A95320	CR1-R2A	Available
PPE	C420 Plus CBRN PAPR	A- Seattle	A95321	CR1-R2A	Available
PPE	C420 Plus CBRN PAPR	A- Seattle	A95322	CR1-R2A	Available
PPE	C420 Plus CBRN PAPR	A- Seattle	A95323	CR1-R2A	Available
PPE	C420 Plus CBRN PAPR	A- Seattle	A95324	CR1-R2A	Available
PPE	C420 Plus CBRN PAPR	A- Seattle	A95325	CR1-R2A	Available
PPE	C420 Plus CBRN PAPR	A- Seattle	A95326	CR1-R2A	Available
PPE	C420 Plus CBRN PAPR	A- Seattle	A95327	CR1-R2A	Available
PPE	C420 Plus CBRN PAPR	A- Seattle	A95328	CR1-R2A	Available
PPE	C420 Plus CBRN PAPR	A- Seattle	A95329	CR1-R2A	Available
PPE	C420 Plus CBRN PAPR	B-Anchorage	A95166	E-2	Available
PPE	C420 Plus CBRN PAPR	B-Anchorage	A95167	E-2	Available
PPE	C420 Plus CBRN PAPR	Portland	A95168	Warehouse - General	Available
PPE	C420 Plus CBRN PAPR	Portland	A95330	Warehouse - General	Available
PPE	C420 Plus CBRN PAPR	Portland	A95331	Warehouse - General	Available
PPE	EBA-5 Escape Breathing Apparatus	A- Seattle	A95169	CR1-R3B	Checked out
PPE	EBA-5 Escape Breathing Apparatus	A- Seattle	A95170	CR1-R3B	Checked out
PPE	ELSA Escape Breathing Device	A- Seattle	A59877	CR1-R2B	Checked out

PPE	ELSA Escape Breathing Device	A- Seattle	A59878	CR1-R2B	Checked out
PPE	ELSA Escape Breathing Device	A- Seattle	A59879	CR1-R2B	Checked out
PPE	ELSA Escape Breathing Device	A- Seattle	A59880	CR1-R2B	Checked out
PPE	ELSA Escape Breathing Device	A- Seattle	SB7070	CR1-R3B	Checked out
PPE	ELSA Escape Breathing Device	A- Seattle	SB7071	CR1-R3B	Checked out
PPE	ELSA Escape Breathing Device	B-Anchorage	875941	E-2	Available
PPE	ELSA Escape Breathing Device	B-Anchorage	875942	E-2	Available
PPE	JRII Breathing Air Compressor	A- Seattle	A59729	Bay 1	Needs Service
PPE	Portacount Plus 8038	A- Seattle	SB6187	CR2-R7B	Available
PPE	PosiChec3 SCBA	A- Seattle	828922	CR1-R2Floor	Available
PPE	Pressure Test Kit	A- Seattle	A59276	CR2-R8B	Available
PPE	Pressure Test Kit	B-Anchorage	A59278	F-2	Available
PPE	Pressure Test Kit	Portland	A59277	Warehouse - General	Available
PPE	SKA-PAC Cylinder	A- Seattle	A59755	CR1-R2A	Checked out
PPE	SKA-PAC Cylinder	A- Seattle	A59757	CR1-R2A	Checked out
PPE	SKA-PAC Cylinder	A- Seattle	A59759	CR1-R2A	Checked out
PPE	SKA-PAC Cylinder	A- Seattle	A59783	CR1-R3A	Checked out
PPE	SKA-PAC Cylinder	A- Seattle	A59785	CR1-R3A	Available
PPE	SKA-PAC Cylinder	A- Seattle	A59787	CR1-R3A	Available
PPE	SKA-PAC Cylinder	A- Seattle	A59789	CR1-R3A	Available
PPE	SKA-PAC Cylinder	A- Seattle	A59791	CR1-R2A	Available
PPE	SKA-PAC Cylinder	B-Anchorage	A59745	F-2	Available
PPE	SKA-PAC Cylinder	B-Anchorage	A59747	F-2	Available
PPE	SKA-PAC Cylinder	B-Anchorage	A59749	F-2	Available
PPE	SKA-PAC Cylinder	B-Anchorage	A59751	F-2	Available
PPE	SKA-PAC Cylinder	B-Anchorage	A59753	F-2	Available
PPE	SKA-PAC Cylinder	Portland	A59793	Equipment Room	Available
PPE	SKA-PAC Cylinder	Portland	A59795	Response Trailer	Available
PPE	SKA-PAC Cylinder	Portland	A59797	Response Trailer	Available
PPE	SKA-PAC Cylinder	Portland	A59799	Response Trailer	Available
PPE	SKA-PAC Cylinder	Portland	A59801	Equipment Room	Available
PPE	SKA-PAC Escape Breathing Device	A- Seattle	A59754	CR1-R2A	Checked out
PPE	SKA-PAC Escape Breathing Device	A- Seattle	A59756	CR1-R2A	Checked out
PPE	SKA-PAC Escape Breathing Device	A- Seattle	A59758	CR1-R2A	Checked out
PPE	SKA-PAC Escape Breathing Device	A- Seattle	A59782	CR1-R3A	Checked out
PPE	SKA-PAC Escape Breathing Device	A- Seattle	A59784	CR1-R3A	Available
PPE	SKA-PAC Escape Breathing Device	A- Seattle	A59786	CR1-R3A	Available
PPE	SKA-PAC Escape Breathing Device	A- Seattle	A59788	CR1-R3A	Available
PPE	SKA-PAC Escape Breathing Device	A- Seattle	A59790	CR1-R2A	Available
PPE	SKA-PAC Escape Breathing Device	B-Anchorage	A59744	F-2	Available
PPE	SKA-PAC Escape Breathing Device	B-Anchorage	A59746	F-2	Available
PPE	SKA-PAC Escape Breathing Device	B-Anchorage	A59748	F-2	Available
PPE	SKA-PAC Escape Breathing Device	B-Anchorage	A59750	F-2	Available
PPE	SKA-PAC Escape Breathing Device	B-Anchorage	A59752	F-2	Available
PPE	SKA-PAC Escape Breathing Device	Portland	A59792	Response Trailer	Available
PPE	SKA-PAC Escape Breathing Device	Portland	A59794	Response Trailer	Available
PPE	SKA-PAC Escape Breathing Device	Portland	A59796	Response Trailer	Available
PPE	SKA-PAC Escape Breathing Device	Portland	A59798	Response Trailer	Available
PPE	SKA-PAC Escape Breathing Device	Portland	A59800	Equipment Room	Available
PPE	TRC-1 Air Cart	B-Anchorage	A59667	D-1	Available
PPE	TRC-1 Air Cart	Portland	A59781	Response Trailer	Checked out
Particulate Monitoring	DataRAM 4 DR-4000 Area Particulate Monitor	A- Seattle	A59876	CR1-R9A	Available
Particulate Monitoring	DataRAM 4 DR-4000 Area Particulate Monitor	A- Seattle	A60708	ER Truck -- ERT	Available

Particulate Monitoring	DataRAM 4 DR-4000 Area Particulate Monitor	A- Seattle	A60709	ER Truck -- ERT	Available
Particulate Monitoring	DataRAM 4 DR-4000 Area Particulate Monitor	A- Seattle	A60710	ER Truck -- ERT	Available
Particulate Monitoring	DataRAM 4 DR-4000 Area Particulate Monitor	A- Seattle	A60825	CR1-R9A	Available
Particulate Monitoring	DataRAM 4 DR-4000 Area Particulate Monitor	A- Seattle	A60826	CR1-R9A	Available
Particulate Monitoring	DataRAM 4 DR-4000 Area Particulate Monitor	B-Anchorage	A59874	Deployment to Seattle Logistics Center	Available
Particulate Monitoring	DataRAM 4 DR-4000 Area Particulate Monitor	B-Anchorage	A59875	Deployment to Seattle Logistics Center	Available
Particulate Monitoring	DataRAM 4 DR-4000 Area Particulate Monitor	B-Anchorage	A60836	Deployment to Seattle Logistics Center	Available
Particulate Monitoring	DataRAM 4 DR-4000 Area Particulate Monitor	Portland	A60822	PERT	Available
Particulate Monitoring	DataRAM 4 DR-4000 Area Particulate Monitor	Portland	A60823	PERT	Available
Particulate Monitoring	DataRAM 4 DR-4000 Area Particulate Monitor	Portland	A60824	PERT	Available
Particulate Monitoring	PDR-1000AN Personal Particulate Monitor	A- Seattle	A59909	ER Truck -- ERT	Available
Particulate Monitoring	PDR-1000AN Personal Particulate Monitor	A- Seattle	A59910	ER Truck -- ERT	Available
Particulate Monitoring	PDR-1000AN Personal Particulate Monitor	B-Anchorage	A59889	H-2	Available
Particulate Monitoring	PDR-1000AN Personal Particulate Monitor	B-Anchorage	A59890	H-2	Available
Particulate Monitoring	PDR-1000AN Personal Particulate Monitor	Portland	A59901	PERT	Available
Particulate Monitoring	PDR-1000AN Personal Particulate Monitor	Portland	A59902	PERT	Available
Particulate Monitoring	PQ200 Fine Particulate Sampler	A- Seattle	SB6158	CR1-R8Floor	Checked out
Particulate Monitoring	PQ200 Fine Particulate Sampler	A- Seattle	SB6161	CR1-R7Floor	Checked out
Particulate Monitoring	PQ200 Fine Particulate Sampler	A- Seattle	SB6162	CR1-R7Floor	Checked out
Particulate Monitoring	PQ200 Fine Particulate Sampler	A- Seattle	SB6163	CR1-R8Floor	Checked out
Particulate Monitoring	PQ200 Fine Particulate Sampler	A- Seattle	SB6164	CR1-R8Floor	Checked out
Particulate Monitoring	PQ200 Fine Particulate Sampler	Portland	SB6165	Warehouse - General	Checked out
Particulate Monitoring	PQ200 Fine Particulate Sampler	Portland	SB6166	Warehouse - General	Checked out
Particulate Monitoring	PQ200 Fine Particulate Sampler	Portland	SB6167	Warehouse - General	Checked out
Particulate Monitoring	PQ200 Fine Particulate Sampler	Portland	SB6168	Warehouse - General	Checked out
Particulate Monitoring	PQ200 Fine Particulate Sampler	Portland	SB6169	Warehouse - General	Checked out
Radiation Survey	489-4 Beta Detector	A- Seattle	197563	CR2-R9A	Available
Radiation Survey	Identifinder Gamma Spectrometer	B-Anchorage	828523	J-3	Available
Radiation Survey	MRAD 103 Ion Chamber	A- Seattle	A59882	ER Truck -- ERT	Available
Radiation Survey	MRAD 103 Ion Chamber	A- Seattle	A60869	Level A Truck -- LAT	Available
Radiation Survey	MRAD 103 Ion Chamber	A- Seattle	A60870	Level A Truck -- LAT	Available

Radiation Survey	MRAD 103 Ion Chamber	B-Anchorage	A59884	J-4	Available
Radiation Survey	MRAD 103 Ion Chamber	Portland	A59883	PERT	Available
Radiation Survey	Model 12-4 Neutron Counter	A- Seattle	SB7042	CR2-R9A	Available
Radiation Survey	Model 14C General Survey Meter	A- Seattle	SB7043	CR2-R9A	Available
Radiation Survey	Model 15 Beta/Gamma/Neutron Meter	A- Seattle	A59262	Level A Truck -- LAT	Available
Radiation Survey	Model 16 General Survey Meter	A- Seattle	SB7045	CR2-R9A	Available
Radiation Survey	Model 19 MicroR Meter	A- Seattle	SB7044	CR2-R9B	Checked out
Radiation Survey	Model 192 MicroR Meter	A- Seattle	A59247	Level A Truck -- LAT	Checked out
Radiation Survey	Model 192 MicroR Meter	A- Seattle	A59248	Boise - Greg Weigel	Checked out
Radiation Survey	Model 192 MicroR Meter	A- Seattle	A59249	ER Truck -- ERT	Available
Radiation Survey	Model 192 MicroR Meter	A- Seattle	A59250	Level A Truck -- LAT	Checked out
Radiation Survey	Model 192 MicroR Meter	B-Anchorage	A59252	J-4	Available
Radiation Survey	Model 192 MicroR Meter	Portland	A59251	PERT	Available
Radiation Survey	Model 192 MicroR Meter	Portland	SB6172	Response Trailer	Available
Radiation Survey	Model 2241-2 Digital Scalar/Ratemeter	A- Seattle	A59259	Level A Truck -- LAT	Checked out
Radiation Survey	Model 2241-2 Digital Scalar/Ratemeter	A- Seattle	A59916	ERT -- Zone E	Available
Radiation Survey	Model 2241-2 Digital Scalar/Ratemeter	B-Anchorage	A59253	J-3	Available
Radiation Survey	Model 2241-2 Digital Scalar/Ratemeter	B-Anchorage	A59897	J-3	Available
Radiation Survey	Model 2241-2 Digital Scalar/Ratemeter	Portland	A59256	PERT	Available
Radiation Survey	Model 2241-3 Digital Scalar/Ratemeter	A- Seattle	SB6186	ERT -- Zone G	Available
Radiation Survey	Model 3 General Survey Meter	A- Seattle	182091	EPA Office -- J. Rodin	Available
Radiation Survey	Model 3 General Survey Meter	A- Seattle	875934	CR2-R9Floor	Available
Radiation Survey	Model 3 General Survey Meter	B-Anchorage	875939	J-3	Available
Radiation Survey	Model 3 General Survey Meter	Portland	697144	Response Trailer	Available
Radiation Survey	Model 3 General Survey Meter	Portland	697145	Response Trailer	Available
Radiation Survey	Model 3030 Alpha/Beta Scalar	A- Seattle	A59246	CR2-R9A	Available
Radiation Survey	Model 43-90 Alpha Detector	A- Seattle	A59261	Level A Truck -- LAT	Available
Radiation Survey	Model 43-90 Alpha Detector	B-Anchorage	A59255	J-3	Available
Radiation Survey	Model 43-90 Alpha Detector	Portland	A59258	PERT	Available
Radiation Survey	Model 44-10 Gamma Detector	Portland	697147	PERT	Available
Radiation Survey	Model 44-7 Alpha/Beta/Gamma Detector	A- Seattle	A59263	Level A Truck -- LAT	Available
Radiation Survey	Model 44-9 Alpha/Beta/Gamma Detector	A- Seattle	A59260	Level A Truck -- LAT	Available
Radiation Survey	Model 44-9 Alpha/Beta/Gamma Detector	B-Anchorage	A59254	J-3	Available
Radiation Survey	Model 44-9 Alpha/Beta/Gamma Detector	Portland	724747	PERT	Available
Radiation Survey	Model 44-9 Alpha/Beta/Gamma Detector	Portland	724748	Response Trailer	Available
Radiation Survey	Model 44-9 Alpha/Beta/Gamma Detector	Portland	A59257	PERT	Available
Radiation Survey	Model 52-1 Portal Monitor	A- Seattle	A95164	B1-4C	Available
Radiation Survey	Model 52-1 Portal Monitor	A- Seattle	A95165	B1-4C	Available
Radiation Survey	Monitor 4 G-M Meter	A- Seattle	646161	CR2-R9A	Available
Radiation Survey	Monitor 4 G-M Meter	A- Seattle	646163	CR2-R9A	Available
Radiation Survey	Monitor 4 G-M Meter	B-Anchorage	897921	J-4	Available
Radiation Survey	Monitor 4 G-M Meter	Portland	897920	PERT	Available
Radiation Survey	RO-20 Ion Chamber	A- Seattle	A59308	ER Truck -- ERT	Available
Radiation Survey	RadEye B20	A- Seattle	A95142	ER Truck -- ERT	Available
Radiation Survey	RadEye PRD	A- Seattle	A95143	ER Truck -- ERT	Available
Radiation Survey	SAM 935 2x2 NaI Gamma Detector	Portland	A59270	PERT	Available
Radiation Survey	SAM 935 Internal Neutron Detector Gamma Spectrometer	Portland	A59269	PERT	Available

Radiation Survey	SAM 940 Defender Gamma Spectrometer	A- Seattle	A60868	ER Truck -- ERT	Available
Radiation Survey	Sr-90 Source (no model number)	A- Seattle	A59659	CR2-R9A	Available
Radiation Survey	Th-230 Source (no model number)	A- Seattle	A59658	CR2-R9A	Available
Radiation Survey	Thyac III General Survey Meter	A- Seattle	197565	CR2-R9A	Available
Soil Testing/ Sampling	2404 KB Core Sampler	A- Seattle	734060	B2-19A	Available
Soil Testing/ Sampling	2404 KB Core Sampler	A- Seattle	734068	B2-19A	Available
Soil Testing/ Sampling	540MT Geoprobe	A- Seattle	A40642	Fenced Enclosure	Available
Soil Testing/ Sampling	6600 Geoprobe	A- Seattle	A40617	Fenced Enclosure	Available
Soil Testing/ Sampling	DPO-4000 Handheld XRF Analyzer	A- Seattle	C13265	CR2-R9B	Available
Soil Testing/ Sampling	DPO-4000 Handheld XRF Analyzer	A- Seattle	C13266	CR2-R9B	Available
Soil Testing/ Sampling	Equipment Truck (no model number)	A- Seattle	A40616	Fenced Enclosure	Checked out
Soil Testing/ Sampling	Geoprobe Trailer (no model number)	A- Seattle	A40660	Fenced Enclosure	Available
Soil Testing/ Sampling	Moisture Analyzer AGS100 250C PRO	A- Seattle	SB7047	Lab Truck	Available
Soil Testing/ Sampling	Omega	A- Seattle	A95123	CR2-R9A	Checked out
Soil Testing/ Sampling	PetroFlag	A- Seattle	A60795	CR2-R9B	Available
Soil Testing/ Sampling	Ponar Type Grab Sampler, 9 inch x 9 inch	A- Seattle	734056	B2-19A	Available
Soil Testing/ Sampling	RPA-1	A- Seattle	897843	CR2-R9B	Available
Soil Testing/ Sampling	RX-29 Sieve Shaker	A- Seattle	A60819	Bay 2	Available
Support	Air Compressor, <5 HP (no model number)	B-Anchorage	A59987	Rolling Cart	Available
Support	C5000 Series 09397-0 Generator	Portland	A60821	Warehouse - General	Available
Support	CMQD7500 Diesel generator	B-Anchorage	A59962	T-1	Available
Support	EF5200 Gas Generator	Portland	A60885	Warehouse - General	Available
Support	GA-52C Pipe & Cable Locator (metal detector)	A- Seattle	645475	CR2-R1C	Available
Support	Gas Generator, 2-10 KW (no model number)	A- Seattle	645487	B2-26D	Available
Support	Gas Generator, 2-10 KW (no model number)	A- Seattle	645488	B2-26D	Available
Support	Gas Generator, 2-10 KW (no model number)	A- Seattle	897844	B2-15D	Available
Support	Gas Generator, 2-10 KW (no model number)	A- Seattle	951491	Bay 1	Available
Support	Gas Generator, 2-10 KW (no model number)	A- Seattle	A59857	B2-14C	Available
Support	Gas Generator, 2-10 KW (no model number)	A- Seattle	A59858	B2-01D	Available
Support	Gas Generator, 2-10 KW (no model number)	A- Seattle	SB7062	B2-14C	Checked out
Support	Gas Generator, 2-10 KW (no model number)	A- Seattle	SB7063	B1-1C	Checked out

Support	Gas Generator, 2-10 KW (no model number)	A- Seattle	SB7064	B2-01D	Available
Support	Gas Generator, 2-10 KW (no model number)	B-Anchorage	A59984	Q-1	Available
Support	Gas Generator, <2 KW (no model number)	A- Seattle	A59854	B2-01C	Available
Support	Gas Generator, <2 KW (no model number)	A- Seattle	A59855	B2-01C	Available
Support	Gas Generator, <2 KW (no model number)	A- Seattle	A60796	B2-14C	Available
Support	Gas Generator, <2 KW (no model number)	A- Seattle	A60797	B2-14C	Available
Support	Gas Generator, <2 KW (no model number)	A- Seattle	SB7060	B2-14C	Available
Support	Gas Generator, <2 KW (no model number)	A- Seattle	SB7061	B2-14C	Checked out
Support	Gas Generator, <2 KW (no model number)	B-Anchorage	A59966	P-1	Available
Support	Gas Generator, <2 KW (no model number)	B-Anchorage	A59967	P-1	Available
Support	Gas Generator, <2 KW (no model number)	B-Anchorage	A59968	P-1	Available
Support	Gas Generator, <2 KW (no model number)	Portland	A59856	Warehouse - General	Available
Support	Gas Generator, <2 KW (no model number)	Portland	A60800	Warehouse - General	Available
Support	Mercury Vacuum (no model number)	A- Seattle	A60866	Bay 2	Available
Support	Mercury Vacuum (no model number)	B-Anchorage	A94782	Q-1	Available
Support	Mercury Vacuum (no model number)	Portland	A60867	Warehouse - General	Available
Support	Negative Air Machine Unit (NAM) (no model number)	Portland	SB6177	Warehouse - General	Available
Support	Negative Air Machine Unit (NAM) (no model number)	Portland	SB6178	Warehouse - General	Available
Support	Pressure Washer, 1000-5000 psi (no model number)	B-Anchorage	A59964	P-1	Available
Support	Pressure Washer, <1000 psi (no model number)	Portland	SB6180	Warehouse - General	Available
Support	Refrigerator (no model number)	A- Seattle	734079	CR1-R4Floor	Available
Support	Steam Cleaner (no model number)	B-Anchorage	A59963	Q-1	Available
Support	TW-6 Pipe & Cable Locator (metal detector)	A- Seattle	897668	CR2-R1C	Available
Support	Tripod Light/Worklight (no model number)	B-Anchorage	A59973	L-4	Available
Support	Tripod Light/Worklight (no model number)	B-Anchorage	A59974	M-2	Available
Support	WSB-500G Water Bladder, 500-Gallon	B-Anchorage	A59985	P-1	Available
Support	WSB-500G Water Bladder, 500-Gallon	B-Anchorage	A59986	P-1	Available
Support	WSB-500G Water Bladder, 500-Gallon	B-Anchorage	A59994	P-1	Available
Support	Washer and Dryer	B-Anchorage	A94784	Main Bay	Available
Survey/Surveillance	Binoculars (no model number)	A- Seattle	191000	ER Truck -- ERT	Available
Survey/Surveillance	Binoculars (no model number)	B-Anchorage	A25930	R	Available
Survey/Surveillance	Compass (no model number)	A- Seattle	646198	CR2-R2A	Available
Survey/Surveillance	Evolution 5000 Thermal Imaging Camera	Portland	A59852	PERT	Available
Survey/Surveillance	Evolution 5200 HD2 Thermal Imaging Camera	A- Seattle	A95159	ER Truck -- ERT	Available
Survey/Surveillance	GPS 45 GPS	Portland	897927	Response Trailer	Decommissioned



Survey/Surveillance	GPS 60 GPS	A- Seattle	A59942	ER Truck -- ERT	Available
Survey/Surveillance	GPS 76 GPS	B-Anchorage	A25862	G-2	Available
Survey/Surveillance	GPS III Plus	B-Anchorage	A25931	START Truck	Available
Survey/Surveillance	GeoExplorer 3000 (2008)	A- Seattle	SB6188	CR2-R1B	Available
Survey/Surveillance	GeoExplorer Geo 7 Series	A- Seattle	SB7080	CR2-R1B	Checked out
Survey/Surveillance	GeoExplorer Geo 7 Series	A- Seattle	SB7081	CR2-R1B	Checked out
Survey/Surveillance	GeoExplorer III GPS	A- Seattle	A60806	CR2-R1B	Available
Survey/Surveillance	GeoExplorer III GPS	A- Seattle	A60807	CR2-R1B	Available
Survey/Surveillance	GeoExplorer III GPS	Portland	A60805	PERT	Available
Survey/Surveillance	GeoXH GPS	A- Seattle	A95157	CR2-R1B	Available
Survey/Surveillance	Infrared Thermometer (no model number)	A- Seattle	724751	Level A Truck -- LAT	Available
Survey/Surveillance	Night Storm Night Vision Device	A- Seattle	A60814	ER Truck -- ERT	Available
Survey/Surveillance	Night Storm Night Vision Device	A- Seattle	A60816	CR2-R2A	Available
Survey/Surveillance	Night Storm Night Vision Device	Portland	A60815	PERT	Available
Survey/Surveillance	Transit Survey System Level (no model number)	A- Seattle	897891	CR2-R1C	Available
Survey/Surveillance	Transit Survey System Rod (no model number)	A- Seattle	897893	CR2-R1C	Available
Survey/Surveillance	Transit Survey System Tripod (no model number)	A- Seattle	731921	CR2-R1C	Available
Survey/Surveillance	Transit Survey System Tripod (no model number)	A- Seattle	897892	CR2-R1C	Available
Survey/Surveillance	Yardage Pro 500 Range Finder	B-Anchorage	A59970	G-2	Available
Transportation/Logistics	Carryal 295 4x4	A- Seattle	A95117	Trailer A95140	Available
Transportation/Logistics	Decon Shower (no model number)	A- Seattle	A59959	Equipment Trailer -- EQT	Available
Transportation/Logistics	Decon Shower (no model number)	Portland	A60791	Equip Trailer -- - - -	Available
Transportation/Logistics	Equipment Trailer (no model number)	A- Seattle	897919	Fenced Enclosure	Available
Transportation/Logistics	Equipment Trailer (no model number)	A- Seattle	A59280	General Parking Area - Not fenced in	Available
Transportation/Logistics	Equipment Trailer (no model number)	A- Seattle	A95140	General Parking Area - Not fenced in	Available
Transportation/Logistics	Equipment Trailer (no model number)	A- Seattle	A95141	General Parking Area - Not fenced in	Available
Transportation/Logistics	Equipment Trailer (no model number)	A- Seattle	A95145	Fenced Enclosure	Available
Transportation/Logistics	Equipment Trailer (no model number)	A- Seattle	A95146	General Parking Area - Not fenced in	Available
Transportation/Logistics	Equipment Trailer (no model number)	A- Seattle	A95147	General Parking Area - Not fenced in	Checked out
Transportation/Logistics	Equipment Trailer (no model number)	B-Anchorage	A59815	Main Bay	Available
Transportation/Logistics	Equipment Trailer (no model number)	B-Anchorage	A60794	Main Bay	Available
Transportation/Logistics	Equipment Trailer (no model number)	B-Anchorage	A95124	Main Bay	Available
Transportation/Logistics	Equipment Trailer (no model number)	Portland	A94845	Response Trailer	Available
Transportation/Logistics	Equipment Trailer (no model number)	Portland	A95144	Warehouse - General	Available
Transportation/Logistics	Equipment Truck (no model number)	A- Seattle	A40616	Fenced Enclosure	Checked out

Transportation/ Logistics	Geoprobe Trailer (no model number)	A- Seattle	A40660	Fenced Enclosure	Available
Transportation/ Logistics	Minivan (no model number)	A- Seattle	645447	General Parking Area - Not fenced in	Available
Transportation/ Logistics	Mobile Command Post Trailer	B-Anchorage	A25851	Main Bay	Available
Transportation/ Logistics	Mobile Communications Truck	A- Seattle	A95240	Bay 1	Available
Transportation/ Logistics	Mobile Laboratory Truck	A- Seattle	A25468	Bay 1	Available
Transportation/ Logistics	Mobile Laboratory Truck	A- Seattle	C13205	Fenced Enclosure	Available
Transportation/ Logistics	Response Truck (no model number)	A- Seattle	A49333	Level A Truck -- LAT	Available
Transportation/ Logistics	Response Truck (no model number)	A- Seattle	A59961	ER Truck -- ERT	Available
Transportation/ Logistics	Response Truck (no model number)	A- Seattle	A60799	Bay 1	Available
Transportation/ Logistics	Response Truck (no model number)	B-Anchorage	A60965	Main Bay	Available
Transportation/ Logistics	Response Truck (no model number)	Portland	A95241	PERT	Available
Transportation/ Logistics	Rhino 660	B-Anchorage	A94783	Main Bay	Available
Transportation/ Logistics	SCP-TZB06-Z	A- Seattle	A59811	Equipment Trailer -- EQT	Available
Transportation/ Logistics	SCP-TZB06-Z	A- Seattle	A59960	B1-4C	Available
Transportation/ Logistics	SCP-TZB06-Z	B-Anchorage	A59813	S-1	Available
Transportation/ Logistics	SCP-TZB06-Z	B-Anchorage	A60721	S-1	Available
Transportation/ Logistics	SCP-TZB06-Z	Portland	A60790	Equip Trailer -- - -	Available
Transportation/ Logistics	SD2-TZB08-GZ 2-Line Decontamination Unit	A- Seattle	A59812	Equipment Trailer -- EQT	Available
Transportation/ Logistics	SD2-TZB08-GZ 2-Line Decontamination Unit	B-Anchorage	A59814	S-1	Available
Transportation/ Logistics	Space Heater (no model number)	B-Anchorage	A25860	Q-1	Available
Viper Go ERT Kit	Inspiron 15-3521 Laptop Computer	A- Seattle	SB7028	ER Truck -- ERT	Available
Viper Go ERT Kit	Life-Line Gateway Cell-MESH	A- Seattle	SB7027	ER Truck -- ERT	Available
Viper Go ERT Kit	Life-Line LINC DataRam	A- Seattle	SB7010	ER Truck -- ERT	Checked out
Viper Go ERT Kit	Life-Line LINC DataRam	A- Seattle	SB7011	ER Truck -- ERT	Checked out
Viper Go ERT Kit	Life-Line LINC DataRam	A- Seattle	SB7031	ER Truck -- ERT	Available
Viper Go ERT Kit	Life-Line LINC Ludlum	A- Seattle	SB7054	ER Truck -- ERT	Available
Viper Go ERT Kit	Life-Line LINC MultiRae-Pro	A- Seattle	SB7029	ER Truck -- ERT	Checked out
Viper Go ERT Kit	Life-Line LINC MultiRae-Pro	A- Seattle	SB7030	ER Truck -- ERT	Available
Viper Go ERT Kit	Life-Line LINC MultiRae-Pro	A- Seattle	SB7050	ER Truck -- ERT	Available
Viper Go ERT Kit	Life-Line LINC UltraRAE	A- Seattle	SB7052	ER Truck -- ERT	Available
Viper Go ERT Kit	Pelican Case	A- Seattle	SB7034	ER Truck -- ERT	Available
Viper Go Kit - Portland	Inspiron 15-3521 Laptop Computer	Portland	SB7035	PERT	Available
Viper Go Kit - Portland	Life-Line Gateway Cell-MESH	Portland	SB6207	PERT	Checked out
Viper Go Kit - Portland	Life-Line LINC DataRam	Portland	SB7032	PERT	Available



Viper Go Kit - Portland	Life-Line LINC DataRam	Portland	SB7033	PERT	Available
Viper Go Kit - Portland	Life-Line LINC MultiRae-Pro	Portland	SB7025	PERT	Available
Viper Go Kit - Portland	Pelican Case	Portland	SB7026	PERT	Available
Viper Go Kit - Portland	USB Modem (no model number)	Portland	S85910	PERT	Available
Viper Go LAT Kit	Inspiron N5050 Laptop Computer	A- Seattle	SB6202	Level A Truck -- LAT	Available
Viper Go LAT Kit	Life-Line Gateway Cell-MESH	A- Seattle	SB6201	Level A Truck -- LAT	Checked out
Viper Go LAT Kit	Life-Line LINC Ludlum	A- Seattle	SB6200	Level A Truck -- LAT	Available
Viper Go LAT Kit	Life-Line LINC MultiRae	A- Seattle	SB6198	Level A Truck -- LAT	Available
Viper Go LAT Kit	Life-Line LINC MultiRae	A- Seattle	SB6199	Level A Truck -- LAT	Available
Viper Go LAT Kit	Life-Line LINC MultiRae-Pro	A- Seattle	SB7024	Level A Truck -- LAT	Available
Viper Go LAT Kit	Life-Line LINC MultiRae-Pro	A- Seattle	SB7051	Level A Truck -- LAT	Checked out
Viper Go LAT Kit	Life-Line LINC UltraRAE	A- Seattle	SB7053	Level A Truck -- LAT	Available
Viper Go LAT Kit	Pelican Case	A- Seattle	SB6197	Level A Truck -- LAT	Available
Viper Go Removal Kit	Inspiron N5050 Laptop Computer	A- Seattle	SB6208	CR1-R1Floor	Checked out
Viper Go Removal Kit	Life-Line Gateway Cell-MESH	A- Seattle	SB7036	CR1-R1A	Available
Viper Go Removal Kit	Life-Line Gateway Cell-MESH	A- Seattle	SB7055	CR1-R1A	Available
Viper Go Removal Kit	Life-Line Gateway Cell-MESH	A- Seattle	SB7056	CR1-R1Floor	Available
Viper Go Removal Kit	Life-Line LINC DataRam	A- Seattle	SB6204	CR1-R1Floor	Available
Viper Go Removal Kit	Life-Line LINC DataRam	A- Seattle	SB6205	CR1-R1Floor	Available
Viper Go Removal Kit	Life-Line LINC DataRam	A- Seattle	SB6206	CR1-R1Floor	Checked out
Viper Go Removal Kit	Pelican Case	A- Seattle	SB6203	CR1-R1Floor	Available
Viper Go Removal Kit	USB Modem (no model number)	A- Seattle	S85909	CR1-R1Floor	Available
Water Testing/ Sampling	101 Water Level Meter, 300 feet	A- Seattle	A95151	CR1-R8B	Available
Water Testing/ Sampling	101 Water Level Meter, 300 feet	B-Anchorage	A95149	M-2	Available
Water Testing/ Sampling	101 Water Level Meter, 300 feet	Portland	A95150	Equipment Room	Available
Water Testing/ Sampling	102 Water Level Meter, 100 feet	A- Seattle	A95152	CR1-R7B	Available
Water Testing/ Sampling	1200-032 Kemmerer Sampler	A- Seattle	734059	B2-19A	Available
Water Testing/ Sampling	2004PSNP Dredge/Ponar Sampler	A- Seattle	A60719	B2-14B	Available
Water Testing/ Sampling	201D Flowmeter Current Meter	A- Seattle	464494	CR2-R1C	Available
Water Testing/ Sampling	2567 Interface Probe, 100 feet	B-Anchorage	A60707	M-2	Available
Water Testing/ Sampling	556 MPS Water Quality Meter	A- Seattle	A59666	CR1-R7B	Available
Water Testing/ Sampling	556 MPS Water Quality Meter	B-Anchorage	A59665	J-3	Available
Water Testing/ Sampling	556 MPS Water Quality Meter	Portland	A59664	Equipment Room	Available

Water Testing/ Sampling	Alexis Peristaltic Pump	A- Seattle	A95156	CR1-R8B	Available
Water Testing/ Sampling	Alexis Peristaltic Pump	A- Seattle	SB7073	CR1-R8B	Available
Water Testing/ Sampling	Alexis Peristaltic Pump	B-Anchorage	SB7072	M-2	Available
Water Testing/ Sampling	Alexis Peristaltic Pump	Portland	SB7074	Equipment Room	Available
Water Testing/ Sampling	DR 2400 Photometer	B-Anchorage	A59853	L-1	Available
Water Testing/ Sampling	DR 2800 Photometer	A- Seattle	A60883	Portland Warehouse	Available
Water Testing/ Sampling	DeltaTox Analyzer Water Quality Meter	A- Seattle	A59922	CR1-R5A	Available
Water Testing/ Sampling	E/S Sampler Pump	A- Seattle	A60000	CR1-R8B	Available
Water Testing/ Sampling	E/S Sampler Pump	A- Seattle	A60700	CR1-R8B	Available
Water Testing/ Sampling	H.OIL Oil/Water Interface Meter	A- Seattle	A95155	CR1-R7B	Available
Water Testing/ Sampling	H.OIL Oil/Water Interface Meter	Portland	A95154	Equipment Room	Available
Water Testing/ Sampling	Masterflex 115 Pump	A- Seattle	697101	CR1-R7B	Available
Water Testing/ Sampling	Masterflex 115 Pump	A- Seattle	734076	CR1-R8B	Available
Water Testing/ Sampling	Masterflex 115 Pump	A- Seattle	734123	CR1-R7B	Available
Water Testing/ Sampling	Proactive Low Flow Power Booster 3.0 LCD Controller	A- Seattle	SB7041	CR1-R6Floor	Available
Water Testing/ Sampling	Proactive Stainless Steel Mega-Monsoon Pump XL DTW	A- Seattle	SB7040	CR1-R6Floor	Available
Water Testing/ Sampling	Pump Controller (no model number)	A- Seattle	724806	CR1-R6Floor	Available
Water Testing/ Sampling	RediFlo 2 Pump	A- Seattle	724805	CR1-R6Floor	Available
Water Testing/ Sampling	RediFlo 2 Pump	A- Seattle	734191	CR1-R6Floor	Available
Water Testing/ Sampling	U-52 Water Quality Meter	A- Seattle	A95153	CR1-R7B	Available
Water Testing/ Sampling	U-52 Water Quality Meter	A- Seattle	SB7067	CR1-R7B	Available

## Additional Material - XEQ Item List

7/13/2016

Model Name/num	Manufacturer Name	Warehouse
100-VT Anemometer		A- Seattle
42545 High Temperature IR Thermometer	Extech	A- Seattle
460 Personal Locator Beacon	Gypsi	B-Anchorage
800 Hand Pump	Sensidyne	A- Seattle
800 Hand Pump	Sensidyne	A- Seattle
9850 Velocity Meter	Alnor Instruments	A- Seattle
Balance Calibration Weight Set (no model number)		A- Seattle
Balance Calibration Weight Set (no model number)		A- Seattle
Binoculars (no model number)		Portland
Blood Pressure Monitor (no model number)		A- Seattle
Blood Pressure Monitor (no model number)		A- Seattle
Blood Pressure Monitor (no model number)		A- Seattle
Blood Pressure Monitor (no model number)		Portland
C88+ Color Printer	Epson	A- Seattle
C88+ Color Printer	Epson	A- Seattle
Car (no model number)		A- Seattle
Desktop Phone (no model number)		A- Seattle
Digital Answering Machine	General Electric	A- Seattle
Digital Camera (no model number)		A- Seattle
Digital Camera (no model number)		A- Seattle
Digital Camera (no model number)		A- Seattle
Digital Camera (no model number)		A- Seattle
Digital Camera (no model number)		A- Seattle
Digital Camera (no model number)		A- Seattle
Digital Camera (no model number)		A- Seattle
Digital Camera (no model number)		A- Seattle
Digital Camera (no model number)		A- Seattle
Digital Camera (no model number)		B-Anchorage
Digital Camera (no model number)		B-Anchorage
Digital Camera (no model number)		B-Anchorage
Digital Camera (no model number)		B-Anchorage
Digital Camera (no model number)		Portland
External Hard Drive (no model number)		A- Seattle
GV-100S Hand Pump	Gastec	A- Seattle
HazCat Kit KT 1006	HazTech Systems	A- Seattle
HazCat Kit KT 1006	HazTech Systems	Portland
Hi Vol Flow Calibration Kit (no model number)		A- Seattle
Hi Vol Flow Calibration Kit (no model number)		Portland
Hot Plate (no model number)		A- Seattle
JT1000 Portable Radio	Motorola	A- Seattle
JT1000 Portable Radio	Motorola	A- Seattle
JT1000 Portable Radio	Motorola	A- Seattle

JT1000 Portable Radio	Motorola	A- Seattle
JT1000 Portable Radio	Motorola	A- Seattle
JT1000 Portable Radio	Motorola	A- Seattle
JT1000 Portable Radio	Motorola	A- Seattle
JT1000 Portable Radio	Motorola	A- Seattle
JT1000 Portable Radio	Motorola	A- Seattle
JT1000 Portable Radio	Motorola	A- Seattle
JT1000 Portable Radio	Motorola	A- Seattle
JT1000 Portable Radio	Motorola	A- Seattle
JT1000 Portable Radio	Motorola	A- Seattle
JT1000 Portable Radio	Motorola	A- Seattle
JT1000 Portable Radio	Motorola	A- Seattle
JT1000 Portable Radio	Motorola	A- Seattle
Kesrtel 4500 Pocket Weather Tracker	Nielsen-Kellerman	A- Seattle
Kestrel USB Interface	Nielsen-Kellerman	A- Seattle
LCD Projector (no model number)		A- Seattle
LabelWriter 450 Turbo	DYMO	A- Seattle
LaserJet 3055 Printer	Hewlett Packard	Portland
LaserJet 3390 Printer	Hewlett Packard	A- Seattle
LaserJet 4200n Printer	Hewlett Packard	A- Seattle
LaserJet CM2320nf Color Printer	Hewlett Packard	A- Seattle
LaserJet CM2320nf Color Printer	Hewlett Packard	Portland
Manometer (no model number)		A- Seattle
Manometer (no model number)		A- Seattle
Manometer (no model number)		A- Seattle
Manometer (no model number)		Portland
Manometer (no model number)		Portland
Memory Card Reader/Writer (no model number)		A- Seattle
Mk2 Electronic Personal Dosimeter (EPD)	Siemens/Thermo Electron	A- Seattle
Mk2 Electronic Personal Dosimeter (EPD)	Siemens/Thermo Electron	A- Seattle
Mk2 Electronic Personal Dosimeter (EPD)	Siemens/Thermo Electron	A- Seattle
Mk2 Electronic Personal Dosimeter (EPD)	Siemens/Thermo Electron	A- Seattle
Mk2 Electronic Personal Dosimeter (EPD)	Siemens/Thermo Electron	A- Seattle
Mk2 Electronic Personal Dosimeter (EPD)	Siemens/Thermo Electron	A- Seattle
Mk2 Electronic Personal Dosimeter (EPD)	Siemens/Thermo Electron	A- Seattle
Mk2 Electronic Personal Dosimeter (EPD)	Siemens/Thermo Electron	A- Seattle
Mk2 Electronic Personal Dosimeter (EPD)	Siemens/Thermo Electron	A- Seattle
Mk2 Electronic Personal Dosimeter (EPD)	Siemens/Thermo Electron	A- Seattle
Mk2 Electronic Personal Dosimeter (EPD)	Siemens/Thermo Electron	A- Seattle
Mk2 Electronic Personal Dosimeter (EPD)	Siemens/Thermo Electron	A- Seattle
Mk2 Electronic Personal Dosimeter (EPD)	Siemens/Thermo Electron	A- Seattle
Mk2 Electronic Personal Dosimeter (EPD)	Siemens/Thermo Electron	A- Seattle
Mk2 Electronic Personal Dosimeter (EPD)	Siemens/Thermo Electron	A- Seattle
Mk2 Electronic Personal Dosimeter (EPD)	Siemens/Thermo Electron	A- Seattle
Mk2 Electronic Personal Dosimeter (EPD)	Siemens/Thermo Electron	A- Seattle
Mk2 Electronic Personal Dosimeter (EPD)	Siemens/Thermo Electron	A- Seattle
Model 500	Waterline	A- Seattle

Model 99017 Level A Suit Tester	Mar Mac	A- Seattle
Nomex Arctic Jacket Large		B-Anchorage
Nomex Arctic Jacket Large		B-Anchorage
Nomex Arctic Jacket XL		B-Anchorage
Nomex Arctic Jacket XL		B-Anchorage
Nomex Arctic Jacket XXL		B-Anchorage
Nomex Coveralls 38 Short		B-Anchorage
Nomex Coveralls 42 Short		B-Anchorage
Nomex Coveralls 44 Tall		B-Anchorage
Nomex Coveralls 46 Tall		B-Anchorage
Nomex Coveralls 46 Tall		B-Anchorage
Nomex Coveralls 48 Reg		B-Anchorage
Nomex Coveralls Large		A- Seattle
Nomex Coveralls Large		Portland
Nomex Coveralls XL		A- Seattle
Nomex Coveralls XL		Portland
Nomex Coveralls, XXL		B-Anchorage
Nomex Coveralls, XXL		B-Anchorage
Nomex Coveralls, XXL		B-Anchorage
Nomex Coveralls, XXXL		A- Seattle
Nomex Coveralls, XXXL		B-Anchorage
Nomex Coveralls, XXXL		B-Anchorage
Nomex Coveralls, XXXL		B-Anchorage
Nomex Coveralls, XXXL		B-Anchorage
Nomex Down Hard Hat Liner (2)		B-Anchorage
Nomex Fleece Hood (One Size)		B-Anchorage
Nomex Fleece Jacket LT		B-Anchorage
Nomex Fleece Jacket XLT		B-Anchorage
Nomex Fleece Pants XT		B-Anchorage
Nomex Insulated Bib Overall, XXL		B-Anchorage
Nomex Insulated Bib Overalls L		B-Anchorage
Nomex Insulated Bib Overalls L		B-Anchorage
Nomex Insulated Bib Overalls LS		B-Anchorage
Nomex Insulated Bib Overalls LS		B-Anchorage
Nomex Insulated Bib Overalls LS		B-Anchorage
Nomex Insulated Bib Overalls M		B-Anchorage
Nomex Insulated Bib Overalls M		B-Anchorage
Nomex Insulated Bib Overalls M		B-Anchorage
Nomex Insulated Bib Overalls XL		B-Anchorage
Nomex Insulated Bib Overalls XL		B-Anchorage
Nomex Insulated Bib Overalls XLT		B-Anchorage
Nomex Insulated Vest LT		B-Anchorage
Nomex Insulated Vest XLT		B-Anchorage
Nomex Insulated Vest XXLT		B-Anchorage
Nomex Parka w/ Hood Large		B-Anchorage
Nomex Parka w/ Hood Large		B-Anchorage
Nomex Parka w/ Hood Large		B-Anchorage

[illegible]

Q818 Bluetooth GPS Receiver	Qstarz International Co., Ltd.	A- Seattle
Q818 Bluetooth GPS Receiver	Qstarz International Co., Ltd.	B-Anchorage
Q818 Bluetooth GPS Receiver	Qstarz International Co., Ltd.	B-Anchorage
Refrigerant Leak Detector (no model number)		A- Seattle
Series 475 Mark III	Dwyer Instruments Inc.	A- Seattle
Slot Loading Portable BLU-RAY Burner, BDR-XS06	Pioneer Electronics (USA) INC.	A- Seattle
Slot Loading Portable BLU-RAY Burner, BDR-XS06	Pioneer Electronics (USA) INC.	A- Seattle
Stylus C66 Model B241B Printer	Epson	B-Anchorage
Stylus C66 Model B241B Printer	Epson	Portland
Super G3 Printer	Canon	A- Seattle
Time Capsule 2TB Wi-Fi Hard Drive	APPLE	A- Seattle
Time Capsule 2TB Wi-Fi Hard Drive	APPLE	A- Seattle
Time Capsule 2TB Wi-Fi Hard Drive	APPLE	A- Seattle
Time Capsule 2TB Wi-Fi Hard Drive	APPLE	A- Seattle
Time Capsule 2TB Wi-Fi Hard Drive	APPLE	A- Seattle
Time Capsule 2TB Wi-Fi Hard Drive	APPLE	A- Seattle
Time Capsule 2TB Wi-Fi Hard Drive	APPLE	A- Seattle
Time Capsule 2TB Wi-Fi Hard Drive	APPLE	Portland
USB Modem (no model number)		A- Seattle
WS-2310 TWC	La Crosse Technology	A- Seattle
WS-2310 TWC	La Crosse Technology	A- Seattle
WS-2310 TWC	La Crosse Technology	A- Seattle
WS-2310 TWC	La Crosse Technology	A- Seattle
Wireless Router (no model number)		A- Seattle
WorkForce 630 Printer	Epson	B-Anchorage
WorkForce 635 Printer	Epson	A- Seattle
WorkForce 635 Printer	Epson	A- Seattle
WorkForce 635 Printer	Epson	A- Seattle
Yardage Pro 500 Range Finder	Bushnell	A- Seattle
eTrex GPS	Garmin	A- Seattle

Sub Location	Barcode	Status
CR2-R2A	R10-XEQ053	Available
ER Truck -- ERT	R10-XEQ202	Available
OSC Office	R10-XEQ113	Available
CR1-R1A	R10-XEQ049	Available
CR1-R1A	R10-XEQ050	Available
CR2-R2A	R10-XEQ028	Available
Lab Truck	R10-XEQ065	Available
Lab Truck	R10-XEQ066	Available
PERT	R10-XEQ149	Available
CR1-R7B	R10-XEQ323	Available
ER Truck -- ERT	R10-XEQ321	Available
Level A Truck -- LAT	R10-XEQ322	Available
PERT	R10-XEQ324	Available
CR2-R1Floor	R10-XEQ085	Available
CR2-R1Floor	R10-XEQ086	Available
General Parking Area - Not fenced in	R10-XEQ249	Checked out
CR2-R2A	R10-XEQ054	Available
CR2-R2A	R10-XEQ055	Available
CR2-R1A	R10-XEQ018	Available
CR2-R1A	R10-XEQ069	Available
CR2-R1A	R10-XEQ070	Available
CR2-R1A	R10-XEQ071	Available
CR2-R1A	R10-XEQ116	Available
CR2-R1A	R10-XEQ117	Checked out
CR2-R1A	R10-XEQ120	Available
CR2-R1A	R10-XEQ121	Decommissioned
ER Truck -- ERT	R10-XEQ114	Available
Front Office	R10-XEQ125	Available
G-2	R10-XEQ020	Available
G-2	R10-XEQ122	Available
G-2	R10-XEQ123	Available
G-2	R10-XEQ124	Available
PERT	R10-XEQ112	Available
CR2-R2A	R10-XEQ023	Available
CR1-R1A	R10-XEQ031	Available
Corrosive Cabinet	R10-XEQ068	Available
PERT	R10-XEQ072	Available
CR1-R7A	R10-XEQ210	Available
Warehouse - General	R10-XEQ211	Under Service
Lab Truck	R10-XEQ051	Available
CR2-R1A	R10-XEQ301	Available
CR2-R1A	R10-XEQ302	Available
CR2-R1A	R10-XEQ303	Available



CR2-R1A	R10-XEQ304	Available
CR2-R1A	R10-XEQ306	Available
CR2-R1A	R10-XEQ307	Available
CR2-R1A	R10-XEQ308	Available
CR2-R1A	R10-XEQ310	Available
CR2-R1A	R10-XEQ312	Available
CR2-R1A	R10-XEQ313	Available
CR2-R1A	R10-XEQ314	Available
CR2-R1A	R10-XEQ317	Available
CR2-R1A	R10-XEQ318	Available
CR2-R1A	R10-XEQ320	Available
CR2-R2A	R10-XEQ311	Available
ER Truck -- ERT	R10-XEQ147	Available
ER Truck -- ERT	R10-XEQ148	Available
Front Office	R10-XEQ010	Available
CR2-R1Floor	R10-XEQ150	Available
Response Trailer	R10-XEQ127	Available
CR2-R1Floor	R10-XEQ111	Available
CR2-R1Floor	R10-XEQ229	Available
Comms Truck	R10-XEQ230	Available
PERT	R10-XEQ228	Available
CR1-R9B	R10-XEQ224	Available
CR1-R9B	R10-XEQ225	Available
CR1-R9B	R10-XEQ226	Available
Warehouse - General	R10-XEQ222	Under Service
Warehouse - General	R10-XEQ223	Under Service
CR2-R2A	R10-XEQ056	Available
Boise - Greg Weigel	R10-XEQ341	Available
Boise - Greg Weigel	R10-XEQ342	Available
CR2-R9A	R10-XEQ325	Checked out
CR2-R9A	R10-XEQ326	Checked out
CR2-R9A	R10-XEQ327	Checked out
CR2-R9A	R10-XEQ328	Checked out
CR2-R9A	R10-XEQ329	Checked out
CR2-R9A	R10-XEQ330	Checked out
CR2-R9A	R10-XEQ331	Checked out
CR2-R9A	R10-XEQ332	Checked out
CR2-R9A	R10-XEQ333	Checked out
CR2-R9A	R10-XEQ334	Checked out
CR2-R9A	R10-XEQ335	Checked out
CR2-R9A	R10-XEQ336	Checked out
CR2-R9A	R10-XEQ337	Checked out
CR2-R9A	R10-XEQ338	Checked out
CR2-R9A	R10-XEQ339	Available
CR2-R9A	R10-XEQ340	Available
CR2-R9A	R10-XEQ343	Available
CR1-R8B	R10-XEQ038	Available

CR2-R8B	R10-XEQ033	Available
R	R10-XEQ187	Available
R	R10-XEQ188	Available
R	R10-XEQ189	Available
R	R10-XEQ190	Available
R	R10-XEQ191	Available
R	R10-XEQ174	Available
R	R10-XEQ175	Available
R	R10-XEQ176	Available
R	R10-XEQ177	Available
R	R10-XEQ178	Available
R	R10-XEQ179	Available
ERT -- Zone C	R10-XEQ090	Available
PERT	R10-XEQ093	Available
ERT -- Zone C	R10-XEQ091	Available
PERT	R10-XEQ094	Available
R	R10-XEQ180	Available
R	R10-XEQ181	Available
R	R10-XEQ182	Available
ERT -- Zone C	R10-XEQ092	Available
R	R10-XEQ183	Available
R	R10-XEQ184	Available
R	R10-XEQ185	Available
R	R10-XEQ186	Available
R	R10-XEQ199	Available
R	R10-XEQ198	Available
R	R10-XEQ195	Available
R	R10-XEQ196	Available
R	R10-XEQ197	Available
R	R10-XEQ173	Available
R	R10-XEQ165	Available
R	R10-XEQ166	Available
R	R10-XEQ167	Available
R	R10-XEQ168	Available
R	R10-XEQ169	Available
R	R10-XEQ162	Available
R	R10-XEQ163	Available
R	R10-XEQ164	Available
R	R10-XEQ170	Available
R	R10-XEQ171	Available
R	R10-XEQ172	Available
R	R10-XEQ192	Available
R	R10-XEQ193	Available
R	R10-XEQ194	Available
R	R10-XEQ154	Available
R	R10-XEQ155	Available
R	R10-XEQ156	Available

R	R10-XEQ157	Available
R	R10-XEQ151	Available
R	R10-XEQ152	Available
R	R10-XEQ153	Available
R	R10-XEQ158	Available
R	R10-XEQ159	Available
R	R10-XEQ160	Available
R	R10-XEQ161	Available
Front Office	R10-XEQ227	Available
B2-01C	R10-XEQ200	Available
CR1-R7A	R10-XEQ212	Available
CR1-R7A	R10-XEQ213	Available
Cabinet 4	R10-XEQ365	Available
ER Truck -- ERT	R10-XEQ143	Available
ER Truck -- ERT	R10-XEQ144	Available
Level A Truck -- LAT	R10-XEQ145	Available
Level A Truck -- LAT	R10-XEQ146	Available
Computer/ Gear Room	R10-XEQ138	Available
Computer/ Gear Room	R10-XEQ140	Available
R	R10-XEQ142	Available
PERT	R10-XEQ139	Available
PERT	R10-XEQ141	Available
M-3	R10-XEQ063	Available
Equipment Room	R10-XEQ064	Available
CR2-R1Floor	R10-XEQ207	Available
CR2-R2A	R10-XEQ009	Available
CR2-R2A	R10-XEQ095	Available
CR2-R2A	R10-XEQ135	Available
CR2-R2A	R10-XEQ360	Available
CR2-R2A	R10-XEQ361	Available
CR2-R2A	R10-XEQ362	Available
OSC Truck	R10-XEQ250	Available
OSC Truck	R10-XEQ252	Available
START Truck	R10-XEQ251	Available
START Truck	R10-XEQ253	Available
Warehouse - General	R10-XEQ133	Available
Warehouse - General	R10-XEQ134	Available
CR1-R6Floor	R10-XEQ136	Available
CR2-R1B	R10-XEQ096	Available
CR2-R1B	R10-XEQ097	Available
CR2-R1B	R10-XEQ098	Available
CR2-R1B	R10-XEQ099	Available
CR2-R1B	R10-XEQ100	Available
CR2-R1B	R10-XEQ101	Available
CR2-R1B	R10-XEQ102	Available
CR2-R1B	R10-XEQ104	Available
CR2-R1B	R10-XEQ105	Available

CR2-R1B	R10-XEQ106	Available
G-3	R10-XEQ103	Available
G-3	R10-XEQ107	Available
CR1-R2A	R10-XEQ052	Available
CR1-R9B	R10-XEQ030	Available
CR2-R1A	R10-XEQ351	Available
Cabinet 4	R10-XEQ350	Checked out
K-4	R10-XEQ027	Available
Equipment Room	R10-XEQ040	Available
B2-15D	R10-XEQ126	Checked out
CR2-R2A	R10-XEQ218	Available
Comms Truck	R10-XEQ221	Available
Front Office - Cabinet 4	R10-XEQ214	Available
Front Office - Cabinet 4	R10-XEQ216	Checked out
Front Office - Cabinet 4	R10-XEQ219	Available
Front Office - Cabinet 4	R10-XEQ220	Checked out
Lab Truck	R10-XEQ215	Available
PERT	R10-XEQ217	Available
CR1-R1Floor	R10-XEQ366	Checked out
B2-13C	R10-XEQ129	Available
B2-13C	R10-XEQ130	Available
B2-13C	R10-XEQ131	Available
Mobile Command Post (MCP)	R10-XEQ128	Available
CR2-R2A	R10-XEQ057	Available
K-4	R10-XEQ201	Available
CR2-R1Floor	R10-XEQ234	Available
ER Truck -- ERT	R10-XEQ233	Available
Level A Truck -- LAT	R10-XEQ232	Available
CR2-R7B	R10-XEQ035	Available
CR2-R1B	R10-XEQ014	Available

# EPA R10 - WES Critical Item List

7/13/2016

Tag Name	Model Name/num	Quantity			Quantity
		Seattle	Anchorage	Portland	
Air Sampling Media	Summa Canister (no model number)	4	2	1	7
Facepiece	AV 3000 Plus Facepiece	38	9	13	60
GC/MS Standards	11 Componet Gas Mix, Balance Nitrogen	1			1
GC/MS Standards	2-Fluorobiphenyl Standard	6			6
GC/MS Standards	8040 Phenols Mix #1	2			2
GC/MS Standards	8040 Phenols Mix #2	1			1
GC/MS Standards	8040 Surrogate Mix	2			2
GC/MS Standards	8240/8260 System Performance Check Mix	0			0
GC/MS Standards	8260A Int. Standard Mix - for BTEX/PCE	5			5
GC/MS Standards	Carbon Tetrachloride Standard	6			6
GC/MS Standards	Carrier Gas, Nitrogen	24			24
GC/MS Standards	Chlorinated Solvent Mix	5			5
GC/MS Standards	Chlorobenzene-d5 Standard	4			4
GC/MS Standards	Decachlorobiphenyl, 200 ug/mL	0			0
GC/MS Standards	HC BTEX Mix	1			1
GC/MS Standards	Internal Standard, Bromopentafluorobenezene	6			6
GC/MS Standards	PCB Mix, Aorclor 1242	4			4
GC/MS Standards	PCB Mix, Aorclor 1248	4			4
GC/MS Standards	PCB Mix, Aroclor 1016/1260	2			2
GC/MS Standards	PCB Mix, Aroclor 1221	4			4
GC/MS Standards	PCB Mix, Aroclor 1232	4			4
GC/MS Standards	PCB Mix, Aroclor 1254	3			3
GC/MS Standards	PCB Stock Solution, Aroclor 1262 Std	3			3
GC/MS Standards	PCB Stock Solution, Aroclor 1268 Std	4			4
GC/MS Standards	Aroclor 1016 in Oil, 50 mg/kg	2			2
GC/MS Standards	Aroclor 1016 in Oil, 500 mg/kg	2			2
GC/MS Standards	PCE Standard	0			0
GC/MS Standards	Pentafluorobenzene Standard	3			3
GC/MS Parts	Tri Bed Concentrator tube kit, CWA detection	4			4
Health/ First Aid	DuoDote, Auto Injector	11	10	10	31
Level A Suit	Responder - Standard	3	2	1	6
Level A Suit	Responder CSM	21	7	10	38
Level A Suit	Trellchem EVO (HPS) Level A Suit	4			4
Level A Suit	Tychem TK Pass-Through Commander	12			12
Level B Suit	Tychem SL Fully Encapsulating Level B Suit	20	10	10	40
Respirator Adapter	40mm Adapter 805059-01	32	6	5	43
Respirator Adapter	74mm Twin Quarter Turn Adapter 805622	48	6	5	59
Respirator Canister	MPC Plus Cartridge 805557-01	60	16	20	96
Respirator Canister	P-100 Cartridge 052683	67	14	10	91
Respirator Cartridge	7422-FP1 Cartridge	90	39	14	143
Respirator Cartridge	7422-SD1 Cartridge	103	20	28	151
Respirator Cartridge	7422-ZB1 Cartridge (Mercury Vapor)	26	30	4	60
Respirator Cartridge	7422-MB1 Cartridge (Mercury Vapor)	85		19	104